

Place:
Arden Community Hall
636 Hall Rd
Arden, WA



Club Meetings:
Third Tuesday of the Month
at 6:00 PM

The Panorama Prospector

March 2025

PANORAMA GEM AND MINERAL CLUB

Minutes for the February 18, 2025 General Meeting

Four new members were present (3 members of 1 family and 1 individual)

Lynne read the financial report.

The start time for subsequent club meetings will be 6 PM. This is the published official start time. (For safety of our members the start time was temporarily changed to 5:30 PM during December, January and February.)

The Steven's County Times newspaper published an article about our club and gem show. The Chewelah Radio Station will do a promotion of our show 1 week prior for free. To advertise a month prior to the show is \$100. A decision was made to forego the month-long advertisement. This was based on past surveys with radio commercials rating low on how attendees heard about our show.

Lynne presented a "Thank You" gift to Joe Barreca for his work in creating the gem show poster, assembling and mailing the newsletters. Kevin Youngblood did the construction and branding of the box that was given. We learned Joe volunteers his time with the Hudson Bay and Heritage Network including writing articles. Joe is in charge of the 200th anniversary Fur Trade Festival Event 15-18 May 2025.

Lynne presented a "Get Well" gift to Frank Stratton on behalf of the club members. We have missed him and so very glad he is well enough to

SHOW TIME!!!

WOW!!! I want to thank everyone for an incredible effort to make this show one of our best ever. I'm not sure where to start. I guess the front tables where guests fill out the tickets for the door prizes is a good place to start. They were amazing at getting the tickets signed and making everyone feel welcome and taking care of the hourly drawings. Next is the black light display, thanks to everyone who helped there, especially Bob Bristow for hours of explaining how the colors change. It is always one of the main attractions at the show.

The silent auction was another hit, thanks to Kevin's hard work and his humor on the microphone that kept everyone laughing, or at least smiling if they got the punchline. Thanks to everyone that helped there, they moved a lot of rock.

The Wheel of Fortune and Grab Bag area was always busy and fun, thanks to Jim Peters for overseeing it, he had a lot of help and was often looking for something else to do. It was very successful.

Of course the Treasure Hunt was once again well done by Sharon Borgford and her helpers. The booklets that the kids fill out keeps them and often their parents busy and they learn something as well. This year Sharon's display showing all the elements in Cell Phones was impressive.

The ball toss area was very successful and fun. Thanks to everyone who worked there. 644 times someone paid a quarter for three balls to toss and get a prize. They ran out of prizes about an hour before the show ended, what fun they had.

Thanks to Lynne Calvert and Ed Parazoo for taking care of the money and keeping it safe.

Thanks to Leigh Youngblood and her helpers for getting us off to a good start on Wednesday night by getting the tables all put together and in the right places.

Also, a big thank you to all the club members who stayed after the show and helped get everything put back in the trailer. We closed the doors to the public at 5:00 and I locked the building at 7:30!!!

THANKS to ALL!!! Johnie

Minutes cont.

attend this meeting along with Sheila.

Welcome back!

Johnie provided more details about our show on March 7th and 8th. Setup begins Wednesday the 5th at 4:00 PM. Gene will make sure the trailer is moved into place. Leigh has arranged for students to help set up the tables. All hands are requested to be available Thursday morning to help Ginger and Audrey put skirting on the tables; ensure the electrical cables with the lighting are set up, and display cases are filled and secured. The vendors will be in Thursday afternoon. One of our gracious vendors is providing Pizza. Members may bring snacks that are "easy to grab and go". Security was discussed including the "code word". An ATM will be available at the show. The owner receives his money from the fees. Therefore, there is no cost to our club. Several people volunteered to put posters up around the County. All of the display cases were assigned. Johnie reminded everyone to work the front desk if they have down-time. This will give people breaks since this is a busy post with many responsibilities and requires multi-tasking. We have enough rocks for prizes for this year. The club paid \$100 for the grand prize winner. We could use more door prizes to have a greater variety for winners to choose. Greg has fluorescent rocks for the UV light/black cave.

Minutes continued

Roger and Lynne will set up the black cave tent and tables in addition to posting signs around town before the show begins. All hands are requested at the end of the show at 5:00 PM on Saturday to tear down and clean up. This usually takes 1.5 to 2 hours.

Sharon talked about the treasure hunt, teachers packets, and rocks she brought in for the back table display.

Kevin shared a rock and passed it around for people to guess what it was. Sheila shared a rock she brought that looked like Dead Camel Jasper that was featured in our recent newsletter. However, it is not Dead Camel Jasper but the colors and crystals in it were impressive. Dave Paquette shared his collection of cut gem stones. He also brought in a microscope to see the needles in the apatite in quartz. One of our new members, Yosef, brought in crystals from his claim.

Sharon did a presentation on the formation and geology of our local area to explain the variety of ore, gems, minerals, and fossils in our area.

What on Earth is This?

The 2025 Panorama Gem and Mineral Show was a huge success. Students from the Johnson Christian School volunteered to assemble all the tables on Wednesday. More than 20 club members arrived on Thursday to set up all the display cases, lighting, and UV light station. The vendors arrived in the afternoon. This year, we had two Automatic Teller Machines for the convenience of the attendees and vendors. A busload of students from the Evergreen Elementary School arrived on Friday. There was a steady stream of attendees on Saturday. I am excited to announce two new members joined our club during the show. We look forward to getting to know them better at our adventures and meetings. The March club meeting will feature more photos from the show. This year, we had on display a curio cabinet and rocks

that were donated to the club by Mr. and Mrs. Booth. Saturday evening, we had 25 people helping disassemble everything and put away in the trailer. I want to thank all the volunteers that provided their labor, bought pizza, snacks, flowers, and extra touches to make a fantastic show. I am happy with our vendors, caterer, and gracious host at the Fairgrounds who contribute immensely to our success. The photos below are proof of all the joy our club created.

Here's the count of tickets we handed out:

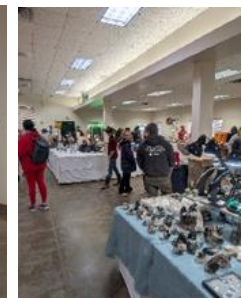
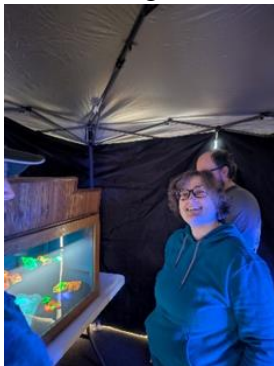
Friday 280

Saturday 508

Also, over 400 passports were given to children.

We had at least 1,188 people attend the show.

Outstanding!





The Show from a Vendor's Viewpoint

By Glynis Hull

(Rustic Rocks)

After a less than stellar showing at the Lewiston show last fall I was somewhat dreading doing this show. Over the past year I have switched from jewelry to rough rock (A move I made with my fingers crossed after some thought and seeing that rough rock vendors are rapidly disappearing at rock shows.) and kept the geode cracking portion of the business. I had reasonable success here last year but I held no illusion of doing the same this year.

Boy did I turn out to be a lousy prognosticator! This was the second best show I have ever done. Geodes, of course, paid the rent, but I also had relative success selling from my rough rock inventory showing there are people out there that are still looking for source material.

At a couple of points we were so busy that April noticed and came to help us by watching over the one end of the booth while Cyndie and I were busy cracking geodes on the other end. Thanks April!! You were a life (and coin box!) saver!

All in all, except for the fact that the grange lady had injured her back and didn't make biscuits and gravy for breakfast, the show went very well for us and I gained a little more confidence and some of the enthusiasm I use to have for the hobby came back.

Identify the "Rock or Mineral"

By Jim Retzer

Last month's rock or mineral:



Find out next month when Jim continues his column!

Volcanoes are erupting all over the world: See where lava is flowing

By Janet Loehrke, USA TODAY,



Lava is erupting from several volcanoes, including one in Hawaii.

Nearly 50 volcanic eruptions have been recorded this year, and more are expected. The Axial Seamount, an underwater volcano about 300 miles off the coast of Oregon, is predicted to erupt soon, scientists say.

The Axial Seamount is a miles-wide undersea volcano that towers more than 3,600 feet over the seabed. Though it last erupted in 2015, it has a history of more than 50 eruptions over the past 800 years.

What's causing all this volcanic activity? It's called the Ring of Fire.

The Ring of Fire and volcanic eruptions

The Ring of Fire is a horseshoe-shaped region in the Pacific about 25,000 miles long that contains more than 450 volcanoes, according to the National Oceanic and Atmospheric Administration .

The "ring," as NOAA says, extends "from the southern tip of South America, along the west coast of North America, across the Bering Strait, down through Japan and into New Zealand." Its volcanoes also extend further south into Antarctica.

"Three out of every four live volcanoes on Earth are here," says National Geographic . "Almost all earthquakes happen here, too."

The Ring of Fire is the result of plate tectonics – giant moving slabs of rock millions of square miles across that can collide with or pull away from one another. Heavier plates can slide beneath lighter ones, heating and melting the rock and creating magma.

Volcanoes form as the magma rises through the Earth's crust .

Two major eruptions in Italy and Hawaii

The Kilauea volcano in Hawaii's Volcanoes National Park has been sporadically erupting since December. Lava erupted from the volcano's top crater on Feb. 11 and again on Feb. 20, and lava fountains rose 60 to 400 feet, according to the USGS Hawaiian Volcano Observatory.



The Kilauea volcano has been erupting since December. USGS Hawaiian Volcano Observatory

And Mount Etna , the tallest volcano in Europe, erupted on Feb. 8 and again two days later, just days before the Hawaii volcano. With ash emissions and other smaller bursts of gas and magma, Etna began to show signs of an impending eruption, multiple news outlets reported.

Because of their proximity to tectonic plate borders in the Ring of Fire, more than a dozen countries frequently experience volcanic activity, which leads to above-normal earthquakes and volcanic eruptions.

These countries have active volcanoes.

How many volcanic eruptions have occurred in 2025?

Fifty to 70 volcano eruptions are recorded around the world each year. As of Feb. 21, 46 volcanoes have erupted; four of those occurred in the first two months of the year.

Will there be more eruptions?

More eruptions are expected this year. With the increased activity at the Axial Seamount, the underwater volcano off the Oregon coast, 2025 could be considered a year with a higher risk of volcanic eruptions, forecasts show .

Researchers at the University of Canterbury in New Zealand have created a new tool using AI that could help predict volcanic eruptions.

The team says its data-driven models could save lives and avoid damage to vital infrastructure by being included in early warning systems for eruptions.

Geologist

[jee-ol-uh-jist] *noun*

Geologists are scientists with unnatural obsessions with rocks. Often too intelligent to do monotonous sciences like biology, chemistry, or physics, geologists devote their time to mud-worrying, volcano poking, fault finding, bouldering, dust collecting, and high-risk coloring.

Membership Dues:

\$20.00 per household per year is due to the club Treasurer Frank Stratton on the third Tuesday of November for regular members. Dues can also be sent to: Panorama Gem and Mineral Club c/o Johnie Pitman, 701 B Williams Lake Rd, Colville, WA 991114.

Webpage: <http://panoramagem.com/>

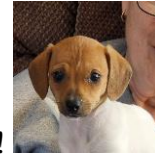
Facebook Group: [Panorama Gem & Mineral Club](#)

We, **The Panorama Gem and Mineral Club**, are a multi-faceted group of mineral-minded people. Our proud members include some real gems, a few fossils, and even some diamonds in the rough. A few have lost some of their marbles, but they know where to get more! A few need to polish their coordination because they are always tumbling! And some are miners who use the “silver pick” as their tool of choice! It should be crystal clear, that we all enjoy this unique conglomeration and above all else we strive to **HAVE FUN**. And we never throw stones (away).

A Quick Note from The Editor (Glynis)

Thank you to those who contributed to this issue. If you have a special story to share, please contribute to OUR newsletter! Send ideas for articles, internet finds, jokes, pictures, adventure stories, science articles or your own articles to me.

gghull@comcast.net



Guinevere says “Hi”!

Refreshment Schedule for 2025

Last names that begin with the letters posted bring refreshments for that month

January – H, I, J

February – K, L, M

March – N, O, P

April – Q, R, S, T

May – W, A, B, C

June – D, E, F, G

July – H, I, J

August – Club Picnic

September – K, L, M

October – N, O, P

November – D, E, F, G

December – Christmas Party

Panorama Gem and Mineral Club: Organizational Chart

Officers

President:	Lynne Calvert		559-906-5923
Vice-President:	Bob Bristow		509-935-4375
Secretary:		gghull@comcast.net	
Treasurer:	Frank Stratton		509-207-8503
Trustee 1:	Kevin Youngblood		509-680-0207
Trustee 2:	Jim Peters		509-992-6921
Trustee 3:	Cyndi Doppler		509-216-5473

Committee Chairs

Program Coordinator:	Sheila Stratton		509-207-8506
Hospitality:	Betty Peters		509-992-6921
Historian:	Sheila Stratton		509-207-8506
Newsletter:	Glynis Hull	gghull@comcast.net	509-981-9714
Show Chair	Johnie Pitman		509-684-8887