

Place:
Arden Community Hall
636 Hall Rd
Arden, WA



Club Meetings:
Third Tuesday of the Month
at 6:00PM

The Panorama Prospector

August 2023

PANORAMA GEM AND MINERAL CLUB

Minutes of the July 18, 2023 General Meeting

By Glynis Hull, Secretary

President: Lynne Calvert opened the meeting at 6:00 pm.

The club annual BBQ will be the meeting for August. It will be combined with a sale of the new materials donated and tailgating swap meet. Since most of the donated rock is at Kevin and Leigh's home (1047 Ward Way, 6pm) we will have the BBQ there. Bring your own chair and what you want to drink.

Field trips: It was decided the next field trips will be in the fall when the weather is cooler since most places can be exceptionally hot during the summer time.

There has been another donation of roc to the club.

A volunteer for share-a-rock is needed for September.

Roger shared a "rock" that was actually glass from a fiberglass factory where he once worked. He told the story of how he had to walk out on hot glass to pick up the chunk.

Cyndi shared a large slab to try ad determine if anyone knew what it was.

(cont. on page 4)

It's August! It's the PGMCM Picnic!! Barbecue, Picnic, Purchase Rocks and Tailgate Rock Swap Event Notification!

The month of **August** is designated as our annual barbecue picnic. At the last meeting we had a good number of members in attendance, but this year we are changing our meeting location to better accommodate the event. If you missed that meeting, you need to be updated on the details that follows:

This month meeting is **August 15th** and will start at the usual time of **6:00 pm**. The location will be at Kevin and Leigh Youngblood residence **1047 Ward Way, Colville.**

Because we will be gathering outside everyone attending should bring a leisure chair or something of their desire to sit on. The Club will be providing the main items consisting of pulled pork & Polish Dogs. Bring your own drinks, but no alcoholic beverages. We will have bottle water available also. We ask members to bring a **desert, salad, or side dish.**

This is a great time to chat with various members and look over the donated rock collection to determine what you need to buy to add to your own collection. There are some amazing materials that are no longer available to collect anymore.

Afterwards, we will have a tail-gate **ROCK** trading & show time. Bring anything you want to share or trade.

We look forward to this event and the time to fellowship with other Club members.

If you have any questions, please respond back to one of the Executive Board Members or me so we can address them.

Frank Stratton
Panorama Gem & Mineral Club
Treasurer
Cell 509-207-8503
<http://panoramagem.com/club/>

Rock Hounding with the Bristows

By Lynne Calvert

On July 25th 2023, Roger and I met Bob, Linda, and their granddaughter, Naomi, in Chewelah to go rock hounding near the old Blue Bird copper mine. We left our car and rode with the Bristows. We traveled south on HWY 395 and turned on to a dirt road, past trees, fields, a dog training camp, a few houses and WHOA - one of the houses had a horse with its head through an open window to eat snacks from the dining room table. We all had a laugh at the sight. After a few turns onto more dirt roads we pulled over near some boulders that were painted different colors. We gathered our shovels, picks, hammers, and buckets. The mine shaft is a short walk through a wooded area. Each of us studied the area carefully to identify where the shaft was to avoid walking too close.

We were looking for malachite and azurite. Linda, Naomi, and I began lightly digging around in the tailings. Bob and Roger were digging with the shovels. We all found several pieces for our buckets. Bob encouraged Roger to dig in one area. He dug and found a few small pieces. Thinking he would find better specimens deeper, he kept digging – and digging – until he hit bedrock. There weren't any significant pieces found in the hole. We surmised if he had dug a little closer to the mine shaft there would likely be better pieces. Roger filled the hole back up for safety's sake. Meanwhile, us ladies found fairly good specimens. Naomi found a heart shaped piece. Roger and Bob began searching in the tailings as well. Roger found a piece with azurite crystals. He

also found a couple of large pieces of malachite with azurite interspersed.

After a couple of hours we were tired and ready to go. We passed the same house with the horse. This time I had my camera ready but the horse, of course, was no longer at the window. We arrived at our car and realized we were missing two big rocks Roger wanted to bring home. (We were bewildered because we knew we had to make two trips from the tailing pile to the car to collect our tools, buckets, and rocks. Yet, somehow, we forgot the large rocks on our second trip.) The Bristows departed for home. We decided it wasn't too far a drive to go back and haul those rocks to our car. We stopped at a gas station to get refreshing fountain drinks before turning onto the dirt road. Unsure of which roads we took the first time, we pressed on hoping each turn was the correct way. When we saw the dog training camp we knew we had made all the correct turns. Roger hauled the two rocks to the car and we headed home with joy that Bob showed us this great site and a great time. It was a FINE rock hounding day!



Bob, Linda, and Roger walking up the path



Bob encouraging Roger to keep digging



Roger digging while Linda and Naomi search the tailing



Naomi found a heart-shaped specimen

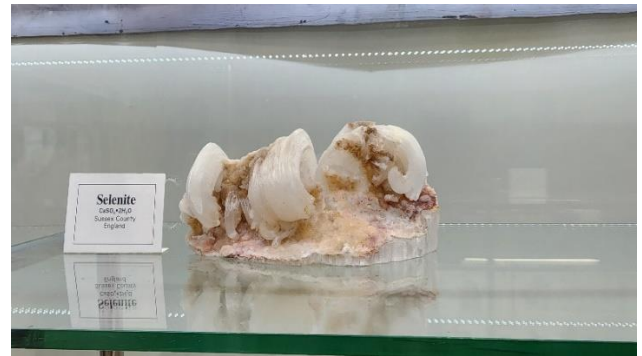
Butte Montana's Hidden Gem

By Glynis Hull

I was recently in Butte Montana on an overnight stay. I arrived early enough in the day that I had time to kill before dinner and bedtime. I Googled things to do in Butte and it came back with several appealing options. It seems the Montana Technical University is located in Butte and on their campus is a gem and mineral museum. I decided to spend my afternoon there and was it a real treat. Clearly there were specimens from all over but there were also nice specimens from around the Pacific Northwest, and in particular, from the mining industry in Montana.

It was hard to not take pictures of everything I saw! I tried to be selective but still came up with plenty of "ooo, cool" pictures to salivate over whenever I need a "rock fix"! Most everything was well-labelled and in some of the displays there were explanations in detail about the specimens.

So if you find yourself in Butte with some time to kill, wander on up to the MTU campus and find the gem and mineral museum. Plan on treating yourself to a couple of hours of eye candy!



Rock mosaic (intarsia) on display at museum

Identify the “Rock or Mineral”

By Jim Retzer

Last month’s rock or mineral:



Thulite is a translucent pink manganese-bearing mineral belonging to the zoisite mineral group and contains manganese, calcium, and aluminum hydroxy sorosilicate. In Thulite Manganese substitutes for calcium in the structure. It is often mottled with white calcite.

Thulite was first discovered in Norway in 1820 and was named for the Norwegian mythical region of Thule and is the national stone of Norway. Thulite is also found in Austria, Mitchell County, North Carolina and small quantities in Okanogan County, Washington. There is also a variety found in Namibia where the color can be highly variable with most of the deposits being greenish in nature, but occasionally the desirable pink color is found.

Thulite, as a pink variety of zoisite with a chemical formula of $\text{Ca}_2\text{Al}_3(\text{SiO}_4)_3(\text{OH})$ and is in the Orthorhombic crystal system. It has a Mohs hardness of 6 – 6.5 with a specific gravity of 3.2 – 3.4. It is generally red to pink in color with a vitreous luster.

In Washington State a rare and unusual variety of Thulite is found in the Tunk Creek area of Okanogan

County. Thulite from this location is considered to be a rare and unusual with this variety of Thulite displaying three colors: Pink, Green and Black. The Washington thulite tends to be finer than the Norwegian variety. It is found in lenses 3 feet across in a hornblende gneiss formation.

This month’s rock or mineral:



(minutes cont. from page 1)

The club will sell garnets in mineral oil in small jars at the Marcus Ciderfest in October. Lynne passed out jars to be filled.

Betty announced a quilt raffle for a Deer Park community group and showed the beautiful quilt to be raffled. Tickets are \$1 each. Contact Betty Peters for details.

Minutes of the Executive Committee Meeting August 8, 2023

Final details of the picnic.

Kevin and Leigh couldn’t make it to the NWF show.

Need a nominating committee for September.

Booths/Displays at local fairs

Need to move trailer from fairgrounds because of fair.

No Secretary or treasurer reports.

From Jim the Jokester:

Some days you are the Archaeopteryx, some days you are the coprolite!

CRYSTAL CLEAR

M O O N S T O N E V T E S D I
E E N I R T I C L T G N R X T
H N E E N O T S N U S I Y D O
N I R D T E N R A G V L I O P
L T I L C D E U R F G A C C A
E S H A Y X E Q L W M M W Y Z
E E P R P E R I D O T R B H T
G L P E Y G F T N G Y U D G G
U E A M O G Y D S V C O Z W F
M C S E T S M H D Y E T E E Q
T V N Y H Q M Z L X H A P X E
C Z T R A U Q R T N E T W U D
K P X I K I E P U T M G E C B
E E S L P L G I O B V Q R M W
A Q U A M A R I N E Y I J I A

Word Bank:

- | | |
|-------------|----------------|
| 1. AMETHYST | 9. MOONSTONE |
| 2. DIAMOND | 10. CITRINE |
| 3. QUARTZ | 11. GARNET |
| 4. EMERALD | 12. CELESTINE |
| 5. SUNSTONE | 13. TOURMALINE |
| 6. RUBY | 14. PERIDOT |
| 7. TOPAZ | 15. AQUAMARINE |
| 8. SAPPHIRE | |

Membership Dues:

\$20.00 per household per year is due to the club Treasurer Frank Stratton on the third Tuesday of November for regular members. Dues can also be sent to: Panorama Gem and Mineral Club c/o Johnie Pitman, 701 B Williams Lake Rd, Colville, WA 991114.

Webpage: <http://panoramagem.com/>

Facebook Group: [Panorama Gem & Mineral Club](#)

We, **The Panorama Gem and Mineral Club**, are a multi-faceted group of mineral-minded people. Our proud members include some real gems, a few fossils, and even some diamonds in the rough. A few have lost some of their marbles, but they know where to get more! A few need to polish their coordination because they are always tumbling! And some are miners who use the “silver pick” as their tool of choice! It should be crystal clear, that we all enjoy this unique conglomeration and above all else we strive to **HAVE FUN**. And we never throw stones (away).

A Quick Note from The Editor (Glynis)

Next month: Back to Yellowstone (unless you send me your articles!). We are always looking for newsletter inputs from our members. If you have an idea for an article, please forward it to gghull@comcast.net. If you don't want to write a whole article, send me pictures with a brief note about them and I'll be happy to put them in this newsletter. Remember, “a picture is worth a thousand words”!

Refreshment Schedule for 2023

Last names that begin with the letters posted bring refreshments for that month

January – N, O, P
 February – Q, R, S, T
 March – W, A, B, C
 April – D, E, F, G
 May – H, I, J
 June – K, L, M
 July – N, O, P
 August – Club Picnic
 September – Q, R, S, T
 October – W, A, B, C
 November - D, E, F, G
 December – Christmas Party

Panorama Gem and Mineral Club: Organizational Chart

Officers

President:	Lynne Calvert	lynnecalvert501@gmail.com	559-906-5923
Vice-President:	Bob Bristow	bristow71@outlook.com	509-935-4375
Secretary:	Glynis Hull	gghull@comcast.net	509-981-9714
Treasurer:	Frank Stratton	frstratton@outlook.com	509-207-8503
Trustee 1:	Darla Clowser		
Trustee 2:	Jim Peters	jimnbetty17@gmail.com	509-992-6921
Trustee 3:	Cyndi Doppler		509-216-5473

Committee Chairs

Program Coordinator:	Sheila Stratton	skstratton@hotmail.com	509-207-8506
Hospitality:	Betty Peters	jimnbetty17@gmail.com	509-992-6921
Historian:	Sheila Stratton	skstratton@hotmail.com	509-207-8506
Newsletter:	Glynis Hull	gghull@comcast.net	509-981-9714
Show Chair	Johnie Pitman	jgpitman@outlook.com	509-684-8887