

Place:
Arden Community Hall
636 Hall Rd
Arden, WA



Club Meetings:
Third Tuesday of The
Month at 6:00PM

The Panorama Prospector

June 2021

PANORAMA GEM AND MINERAL CLUB

May 18, 2021 Meeting Minutes

By Audrey Rickard

Attendance: 25 Members, 4 Visitors. New member, John, signed up. Sheila Stratton started our meeting with greetings and housekeeping announcements. Our featured speaker was not able to make it tonight.

Frank Stratton read the Treasurer's Report
Membership fees are due in November- \$20 per household.

Upcoming Field Trips: Saturday, May 22nd at the Wild Turkey Mine near Valley. Ophiolite and high quality We leave at 8:30am prompt so please be a little early. We will also be going up on Sunday, May 23rd. Dress in layers for the weather and bring drinking water. Suggested tools to bring: bucket, rock hammer, chisel, geopick, and 3 lb. sledgehammer.

Monday, May 24th, Joe Barreca will be leading a field trip to Phillips Ranch Prospect. We will meet at the Northport Chevron at 10 am. Bornite, peacock copper, selenite crystals, and sulfur are some of the expected mineral finds. Dress in layers for the weather and bring drinking water. Suggested tools to bring: bucket, sledgehammer, claw hammer, and chisel.

Continued Page 4

Wild Turkey Mine

Noble Serpentine Field Trip

By Jim Retzer

A short distance northwest of Waitts Lake just outside of Valley, Washington is the Wild Turkey mine. The mine has been owned and operated by Jim and Jennifer Sahli since 2018. Here the Sahli's are mining a source of serpentine called Noble Serpentine. The Noble Serpentine at this location differs from others in that it contains high amounts of calcium instead of iron and is a serpentine-calcite blend, that is rich in magnesium and aluminum. The term "Noble" is used for the more attractive and durable varieties (all of antigorite) of serpentine. It is used extensively as gemstones and in ornamental carvings. In the case of the material at the Wild Turkey mine, the magnesium and water content give it the light to dark green coloration.

The Sahlis's have discovered many varieties of serpentine at this location. The main interest at the mine is the Noble Serpentine found at the main pit location which has a deposit of this material from 30 to 40 feet thick. This is a lime green, semi-translucent material with white streaks. There is a lower pit that has the typical dark green variety of serpentine that is harder.

The Panorama Gem and Mineral Club had the opportunity to visit the mine and obtain some of this material. The owners open the mine one weekend a month for the public to dig their own material at a

cost of \$1.00 a pound. Information on when the mine is open to the public can be obtained on the mine website www.washingtonrocks.net.



Main Pit at Wild Turkey Mine



Material Scattered Throughout the Area

The Noble Serpentine I obtained from this location has a hardness of 3 to 5 and is quite easy to work. It takes a good polish that is more a waxy luster rather than the glassy luster of agates or jaspers. When working with this material you must remember it is soft and you need to use less aggressive grits. Also, when tumbling this material, you can produce good results with less run times. Larger pieces make nice display pieces.



Sheila Stratton (Our Club President) And Jim Peters Show Samples of Material They Were Collecting.



Noble Serpentine Cabochons



Noble Serpentine Samples

Do you have any knowledge or information you think would be of interest to the club members? If so, please submit an article. We need the input to keep this newsletter interesting and stimulating for our members.

Designer Cabochons

By Jim Retzer

In the last few years, the term “designer cabochon” has been seen more and more. If you have looked at these designer cabochons you may have noticed the higher prices than you normally see on cabochons. In fact, the prices of these designer cabochons have been increasing year after year. So, what is this “designer cabochon”? How much more special are they than the “normal” cabochons we usually see? And what is driving the value of these gemstones?

First, what is a “designer cabochon”? Most of us are familiar with the standard oval, round, square, or rectangular cabochons that are marked out from a template and are a standard size such as 30X40mm or 8X10mm. These are termed, “calibrated cabochons”. They are cut to a specific size and shape and can be placed in mass-produced jewelry without modifying the stone or jewelry. This is usually the

first type of cabochon most people learn to cut. The next type of cabochon is the “freeform”. This is cut to a shape determined by the cutter to either take advantage of the smaller pieces of material or to produce a cabochon that utilizes the materials natural pattern to bring out its most potential. Freeform cabochons can be any shape or size and even in standardized shapes from custom templates.

The “designer cabochon” is a type of freeform cabochon taken to another level. When a designer cabochon is made the design of the cabochon in relation to the patterns in the material used is the main importance. Premium material free of defects and with good patterns and color are used. The cabochon’s shape is chosen to maximize the stone's patterns and color to produce a work of art. These unique one-of-a-kind works of art can be used to produce unique jewelry or put into a collection. Today’s designer cabochons are cut with a low dome profile and with a crisp, sharp girdle edge.



Blue Mountain Jasper

Many cabochon cutters cut their material to get the maximum usage. When cutting designer cabochons, the materials design is the dominating factor. Sometimes only one stone may be cut from a slab thus producing a good amount of waste.

As previously mentioned, the cutter must consider the material's color patterns and forms to produce these works of art. Because the cutter is looking for the best quality material with the best patterns and colors, this makes the material cost more expensive thus the higher cost of these cabochons.

Speaking of material costs, we could do a whole article on the increasing prices of quality material. But basically, it is supply and demand. We see new material come on the market only to disappear in a short time for a variety of reasons. Also, the higher grades of material are scarcer than the average run. How many times have you obtained some material that produced outstanding cabochons only to find out the next year you cannot find any more?

Another factor in the rising costs of designer cabochons is that they are not just being utilized in jewelry. In the last few years there has developed an interest in these as collector's items. These collectors are obtaining designer cabochons for their artistic value, while others have started collecting the best designs and rarest materials for investment purposes.

Recently, I have made an attempt at producing designer cabochons. Right now, I am working more on my technique than the patterns I produce. To develop my skills in cutting these stones I am using lesser quality material but hope to start using better material as I perfect my technique.



Ochoco Sunset Agate

Meeting Minutes

Continued from Page 1

Suggested future field trips: Quartzsite/Parker, Arizona to rockhound for turquoise and Earp, California for agates. Jim Retzer described a wonderful opportunity for workshops and field trips. If interested in the Quartzsite/Parker, Arizona area this winter contact Jim for further information jimrocks@recycledhistory.com

Donations: Joe Barrecca announced that 2 new books were donated to the library:

An Illustrated Guide to Fossil Collecting and Introductory Prospecting and Mining.

Joe is giving away a copy of *Kettle Country Treasure Maps, Rockhounding Field Trips, Volume II* from the Archives of the Panorama Gem and Mineral Club.

Joe Barrecca announced that the newsletter was not sent out ahead of the meeting, so he will hand them out tonight and then mail the rest to those not in attendance.

Roadway Signage: Frank reminded the group that we had talked about refurbishing our signs, but the group consensus was that it is time to get new ones. There are vinyl signs that we can weigh down with sand so the trucks won't blow them over. Frank will research sign styles and prices to present at the next meeting.

Member Requests: Glenna wants to know if anyone has a saw larger than 18" to cut some pieces for her. Brian Martell was suggested. Holly was also looking for someone to cut stone for her.

Help with the Newsletter: Jim Retzer requests that members create and send articles of interest for the newsletter and submit to him at: jimrocks@recycledhistory.com or jim@recycledhistory.com

Continued Page 5

Meeting Minutes

Continued from Page 4

Reminder: Silent auction at refreshment break.
Funds raised go toward scholarship fund.

Johnny Pitman shared his **Rock Story**, then
Sheila asked if there was further business, then
ended the meeting.

Upcoming Events in Our Area

Be sure to check the events before you go as some
may change dates or cancel due to local Covid-19
Regulations.

7/23/2021 7/25/2021

Washington Agate and Mineral Society Annual Show

Tenino City Park
On Park Avenue
Tenino, Washington
<https://warmsolympia.wordpress.com>

8/13/2021 8/15/2021

Puyallup Valley Gem & Mineral Club Annual Show

Tacoma Sportsmen's Club
13814 109th Avenue Court East
Puyallup, WA
Contact Info: (253) 720-9502
Email: jimchristian_205@hotmail.com

8/13/2021 8/15/2021

Mt. Hood Rock Club Annual Show

Jackson Armory
6255 NE Cornfoot Road
Portland, OR
www.mthoodrockclub.com

8/20/2021 8/22/2021

Willamette Agate and Mineral Society Annual Show

Polk County Fairgrounds
520 S Pacific Hwy W
Rickreall, OR
www.WAMSI.net

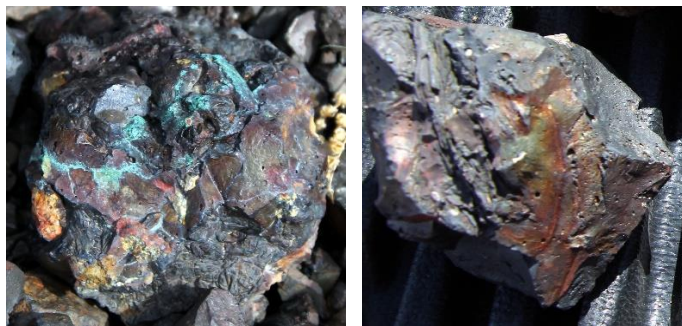
8/27/2021 8/28/2021

Southern Washington Mineralogical Society 55th Annual Show

Silver Lake Grange
3104 Spirit Lake Hwy
Castle Rock, WA
Email: vickijrocks@msn.com
Phone: (360) 751-8031

Identify the "Rock or Mineral"

Last month's rock or mineral:



In the last few months I have seen this come up on
several rockhounding sites where the poster asks to
have it identified. This is "Slag". It is a by-product of
smelting. During smelting, impurities become slag
that float on the molten metal. This waste material is
then skimmed off. Slag is used in several
applications. In this case it was used a railway ballast
along the tracks, which is where I found it.

This month's rock or mineral



Yes.
All three of these photos
belong here!

Membership Dues:

\$20.00 per **household** per year is due to the club Treasurer Frank Stratton on the third Tuesday of November for regular members. Dues can also be sent to: Panorama Gem and Mineral Club c/o Johnie Pitman, 701 B Williams Lake Rd, Colville, WA 991114.

Webpage: <http://panoramagem.com/>

Contact: Rick McDougald
rick-pgmc@hotmail.com

We, **The Panorama Gem and Mineral Club**, are a multi-faceted group of mineral-minded people. Our proud members include some real gems, a few fossils, and even some diamonds in the rough. A few have lost some of their marbles, but they know where to get more! A few need to polish their coordination because they are always tumbling! And some are miners who use the "silver pick" as their tool of choice! It should be crystal clear, that we all enjoy this unique conglomeration and above all else we strive to **HAVE FUN**. And we never throw stones (away).

A Quick Note from The Editor

The restrictions put in place because of the Covid Virus have interrupted and changed many of the club and members plans.

This has resulted in the modification of our club meetings and club activities until further notice.

It is hoped we can resume a somewhat normal schedule of events soon, but until then stay healthy and safe.

Refreshment Schedule for 2021

Last names that begin with the letters posted bring refreshments for that month

January – N, O, P

February – Q, R, S, T

March – W, A, B, C

April – D, E, F, G

May – H, I, J

June – K, L, M

July – N, O, P

August – Club Picnic

September – Q, R, S, T

October – W, A, B, C

November – D, E, F, G

December – Christmas Party

Panorama Gem and Mineral Club: Organizational Chart

Officers

President:	Sheila Stratton	skstratton@hotmail.com	509-207-8506
Vice-President:	Bob Bristow	bristow71@outlook.com	509-935-4375
Secretary:			
Treasurer:	Frank Stratton	frstratton@outlook.com	509-207-8503
Trustee 1:	Jim Peters	jimNbetty17@gmail.com	509-999-9074
Trustee 2:			
Trustee 3:	Greg Cozza	troller@hotmail.com	509-710-0375

Committee Chairs

Program Coordinator:	Sheila Stratton	skstratton@hotmail.com	509-207-8506
Hospitality:	Betty Peters	jimNbetty17@gmail.com	509-999-9074
Historian:			
Newsletter:	Jim Retzer	jimrocks@recycledhistory.com	509-738-2503
Show Chair	Johnie Pitman	jgpitman@outlook.com	509-684-8887