

Place:
Arden Community Hall
636 Hall Rd
Arden, WA



Club Meetings:
Third Tuesday of the Month
Time: 6:00PM

The Panorama Prospector

June 2019

PANORAMA GEM AND MINERAL CLUB

Minutes of the April 16, 2019 Meeting

By: Sheila Stratton

The meeting was opened at 7:00 p.m. by President Rick McDougald. New visitor Lou Stone was welcomed to the meeting. Rick gave a reminder to sign in and that there was a card with information regarding the Idaho Show on the back table. Also, Rick gave a reminder to check out the silent auction.

A compliment was given to Johnie and the Trustees for their work with making the difficult decision of choosing the scholarship recipients and attending awards ceremonies to pass them out. Secretary Sheila Stratton read a letter of thank you scholarship recipient, Jordyn Smith.

The financial report was given by Frank Stratton.

Audrey Rickard expressed that she would be fine with getting the club newsletter by email to save postage. A suggestion was made to put in newsletter to let Joe Barreca know if you would like to receive it by email.

Continued Page 4

Odessa Ring Craters Field Trip

By Bob Bristow

Whoops! Here is tick number five. This was not a field trip to collect specimens, but some of the local fauna insisted on going home with us. Early

in the spring, you can almost be assured that you will run into ticks in sagebrush areas. I haven't asked a tick, but I understand they can sense the heat of your body and will jump on your legs as you walk by. Note: If you find a tick imbedded in your skin, I would suggest you do as the vets do. Simply pull on the tick's body, but not hard enough to pull its head off. Pull steady for about a minute and the tick will let go.

We started out from Chewelah with five members and picked up a sixth at the Long Lake Dam. Our first stop was at Cinnamon Roll. Figure 1 shows Cinnamon Roll and five of the members: Rick, Chana, Bruce, Betty, and Jim. Cinnamon Roll is different from all the other craters. In fact, it isn't a crater at all. It is a mound formed by the same circular rings of basalt as the craters. Figure 2 shows the very top of Cinnamon Roll with Bruce standing in front for scale. Figure 3 is the lowest ring with Rick talking about diving off into the six-inch pool at the base of the ring.



Figure 1 – Cinnamon Roll “Crater” with Rick, Chana (official snake killer), Bruce, Mary, and Jim.



Figure 2 – Top of Cinnamon Roll with Bruce.



Figure 3 – Lower Ring on Cinnamon Roll with Rick About to Dive Into 6-inch Pool in Stream.

The next stop was at Amphitheater Crater on Coffeepot Road. Figure 4 shows the view from space. This is the best crater to visit. There is a turn-out and a gate in the fence. There is no trail to the crater, but it is only about a hundred yards to the first ring.



Figure 4 – Amphitheater Crater with Coffeepot Rd. to the Right.

There are several rings that slope down to the small pond at the center shown in Figure 5. The rings were up to about 10 feet high by up to five feet thick. The distance between rings was wider, but usually not over 15 feet as shown in Figure 6 with Jim and Betty between two of the rings.



Figure 5 – Pond at Bottom of Amphitheater Crater



Figure 6 – Chana and Betty Between Two Rings (no snakes yet).

One of the interesting features was the direction of cooling of the rings. Figure 7 shows a side view of one of the rings with Figure 8 a close-up of some of the columns. The columns run through the rings with each ring tilted toward the center of the crater. This tipping was apparent in rings all around the crater. Cooling always occurs along the length of columns. This means that either the rings are dikes that cooled where they now stand with rock on both sides or else the rings were tilted up after

cooling. Cooling in the current location would fit the theory shown in Figure 9.



Figure 7 – Side View of Ring Showing Inward Slope of Columns.



Figure 8 – Broken Columns,

The third stop was at Cache Crater. This was a completely different kind of crater as shown in Figure 10. It was simply a hole that appeared to have been blasted out of the basalt. On closer examination, it appeared that it hasn't been blasted at all, but that a plume of liquid lava was pulled away from below causing the surface to fall in. If so, this would be a miniature example of how a caldera often forms. Since at one time there was at least one lava flow on top of that in which the crater formed, the crater must have formed after the great floods. This would mean that it formed millions of years after the Columbia Plateau lava

floods due to a thermal plume extending up to almost the current ground surface. Very strange!

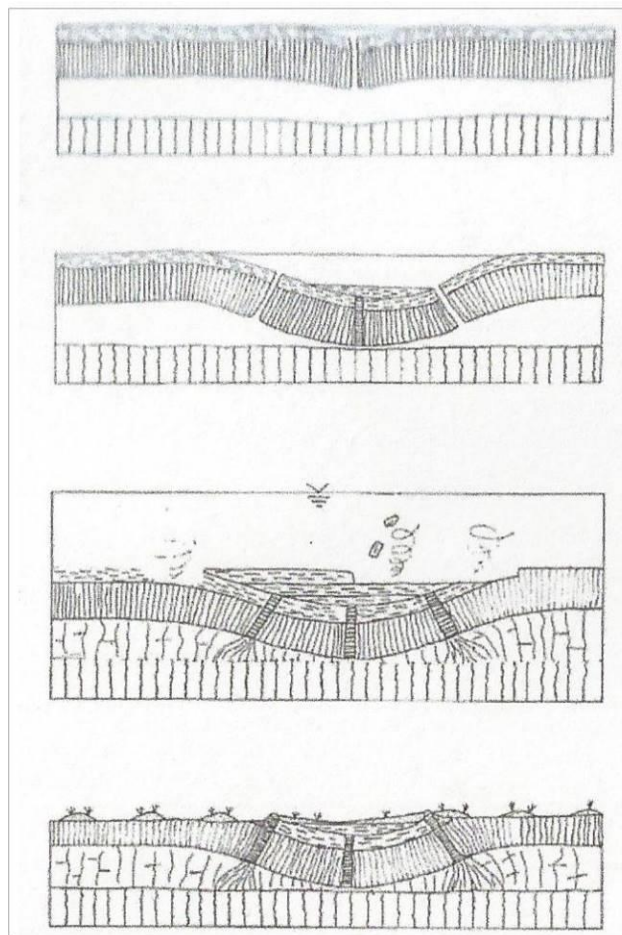


Figure 9 – Crater Formation Theory



Figure 10 – Unusual Cache Crater

Meeting Minutes

Continued from Page 1

A lot of people like receiving the newsletter in paper as they keep them for future reference.

Rick reported that the Historical Society is hosting 125 third graders and is asking for volunteers to work in the mining area. They will have groups of 25 coming through at a time. This will be held on Wednesday, May 29, 2019, at 8:30 a.m. to 11:00 a.m. See Joe to volunteer.

There was a request to discuss about the time of the monthly club meetings. They are currently being held 6:00 p.m. through the winter months and at 7:00 p.m. in the summer months. It was brought up to have the meetings at 6:00 p.m. year around. One of the issues brought up was that people who live quite a ways out of town are getting home quite late. A motion was made by Johnie Pitman to change the time to 6:00 p.m. year around starting in June 2019. Motion was passed. Frank and Sheila volunteered to contact members either by email or calling.

Bruce Hurley announced that the La Farge Mine field trip date was being changed from July 6th to July 13th, 2019. He asked for a raise of hands for approval of July 13th and all was in favor of the change. The outing will be held July 13, 2019, meeting at Tiger Junction Store on Highway 31 (Intersection of Highway 20 and 31) to Metaline Falls at 10:00 a.m.

Vice President Bob Bristow expressed his appreciation to everyone that helped at the funeral of his wife, Luci Bristow.

Johnie's Jabber

By: Johnie Pitman

The Stevens County Historical Society ask the club to participate in a program at the "Keller Heritage Center" on May 29. The program was designed for the Colville third graders and included talks and demonstrations on five topics,

Johnie's Jabber

By: Johnie Pitman

The Keller House, Forestry, The Museum, Pioneer Village, and Mining. There were 125- 130 kids that they divided into 5 groups that rotated through the different areas, spending about 20 minutes at each area. The club was asked to staff the Mining area so Gene Fisher, Ginger and I tried to explain the role of mining in the early days in this area. Then explain what the equipment is that is located on the grounds of the Museum and how it was used in the mines. Its rather difficult to get the attention of third graders that are on a field trip near the end of the school year, but overall it went well for us. I don't know if the kids learned anything or not. A beautiful and fun day.

Jim Peters, Betty Peters and I went to Colville High School Awards Night and presented the club \$1000 scholarship to Hallie Cox, on May 29th.

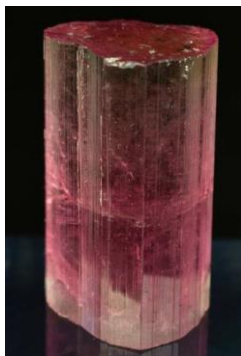


On June 6th Bob Bristow presented Jaydin Ludeman with the clubs \$1000 scholarship at Jenkins High School (Chewelah).



Thanks to Jim and Betty Peters and Bob Bristow for helping with the scholarship program.

Identify the “Rock or Mineral”



Last month’s mineral is Tourmaline. "Tourmaline" is the name of a large group of boron silicate minerals. These minerals share a common Hexagonal crystal structure and similar physical properties - but vary tremendously in chemical composition. The wide range of compositions and color zoning within crystals causes tourmaline to occur in more colors and color combinations than any other mineral group. Tourmaline is a six-member ring cyclosilicate having a trigonal crystal system. It occurs as long, slender to thick prismatic and columnar crystals that are usually triangular in cross-section, often with curved striated faces. Tourmaline has a Mohs hardness of 7 to 7 ½, and indistinct cleavage. Tourmaline is also relatively resistant to chemical weathering.

This month’s mineral:



Rick's Ramblings June 2019 A Few Words the Club President

NOTE: Starting on Tuesday, June 18th, 2019 we will meet at **6:00PM!**

Gene Fisher has asked if we could find someone to take over the Club’s Rock Shop.

I haven't heard back from Stevens County Commissioners about the Courthouse display case.

Field trip Reports:

Here are some of our club members trips this last month. We hope to have a few reports during the “Show and Tell” at the June Club Meeting.

Saturday, June 8th - Odessa Ring Dikes - Odessa, WA. - Geologic Excursion with Bob Bristow.

Saturday, June 15th - Keystone Mines, both Upper and Lower – Sample-Collecting Field Trip with Scot Jackson.

May 2019 - McDermitt, NV rock collecting

May 2019 - Oregon rock collecting

North Idaho Mineral Club - The 59th Annual Show

Up Coming Club Field Trips:

Proposed: Club meeting we'll select date/time - marble with pyrite Jim Creek - Sample-Collecting Field Trip with Scot Jackson. Choose: June 22 or 23; June 29 or 30; or July 20 or 21.

Saturday, July 13th - Lefarge Quarry near Metaline Falls - Sample-Collecting Field Trip - Trilobites with the Hurleys.

Membership Dues:

\$20.00 per **household** per year is due to the club Treasurer Frank Stratton on the third Tuesday of November for regular members. Dues can also be sent to: Panorama Gem and Mineral Club c/o Johnie Pitman, 701 B Williams Lake Rd, Colville, WA 99114.

Webpage: <http://panoramagem.com/>

Contact: Rick McDougald, President, pres-pgmc@hotmail.com

We, **The Panorama Gem and Mineral Club**, are a multi-faceted group of mineral-minded people. Our proud members include some real gems, a few fossils, and even some diamonds in the rough. A few have lost some of their marbles, but they know where to get more! A few need to polish their coordination because they are always tumbling! And some are miners who use the “silver pick” as their tool of choice! It should be crystal clear, that we all enjoy this unique conglomeration and above all else we strive to **HAVE FUN**. And we never throw stones (away).

If you have any particular interest you would like to see articles on feel free to contact me at jimrocks@recycledhistory.com or let me know at our next meeting on **June 18, 2019**

Refreshment Schedule for 2019

Last names that begin with the letters posted bring refreshments for that month

January – N, O, P
 February – Q, R, S, T
 March – W, A, B, C
 April – D, E, F, G
 May – H, I, J
 June – K, L, M
 July – N, O, P
 August – Club Picnic
 September – Q, R, S, T
 October – W, A, B, C
 November - D, E, F, G
 December – Christmas Party

Panorama Gem and Mineral Club: Organizational Chart

Officers

President:	Rick McDougald	Pres-pgmc@hotmail.com	
Vice-President:	Bob Bristow	Bristow@theofficenet.com	509-935-4375
Secretary:	Sheila Stratton	skstratton11@gmail.com	509-207-8506
Treasurer:	Frank Stratton	frstratton@outlook.com	509-207-8503
Trustee 1:	Sherryl Sinn	sherrylsinn@gmail.com	509-684-6093
Trustee 2:	Dennis Gibbens	dddgibbens@yahoo.com	509-684-3532
Trustee 3:	Jim Peters	JimNbetty17@gmail.com	509-937-2238

Committee Chairs

Program Coordinator:			
Hospitality:	Sherryl Sinn	sherrylsinn@gmail.com	509-684-6093
Club Shop:	Gene Fisher	295 Gold Creek Loop Rd, Colville, WA 99114	509-684-8546
Historian:			
Newsletter:	Jim Retzer	Jimrocks@recycledhistory.com	509-738-2503
Show Chair	Johnie Pitman	jgpitman@wildblue.net	509-684-8887