

Place: Arden  
Community Club  
Hall Rd  
Arden, WA



Time 7:00 PM  
Third Tuesday  
April - September  
6:00 PM October -  
March

## **The Panorama Prospector**

*October 2018*

### **Panorama Gem and Mineral Club**

Minutes for Meeting  
by Sheila Stratton  
September 18, 2018  
7:00 p.m.

The meeting was opened by President Johnie Pitman at 7:00 p.m. A warm welcome was given to Steve Fox who was visiting from Prescott, Arizona.

Vice President Bob Bristol gave a warm "hello" to everyone! After the Merikay Mine outing, he ended up with an extra rock hammer and was looking for an owner. He talked about jadeite being found in the Frazer River and garnets being found in the Teanaway River.

Frank Stratton gave the financial report. One recipient of the scholarship fund has not yet contacted the club to receive her money. (After the meeting, Frank contacted her and sent the scholarship money to the university to go towards her account.)

Our faithful seamstress, Betty Peters, brought 200 more rock bags to the meeting. We are so thankful for her hard work in supporting our show.

Johnie announced that tomorrow, Wednesday, 9/19/18, is a workday for working on the show display cases. It was announced that Sheila had purchased fabric and contractors tape but would appreciate women that are coming to help with recovering liners bring scissors. Johnie brought up that the trailer needs tie downs and that some have been purchased by Gene. June reported that she is working on a jade tree to donate for show.

It was then discussed that Joe Barreca will be retiring from doing the news letter. It has been a great privilege for our club to have such an outstanding news letter for so many years.

*continued page 2*

### **Going for Gold**

*by Joe Barreca*



[Martin (Marty) Whitney panning for gold]

On September 27th the club held a field trip to pan for gold on the Columbia River North of Northport. We met near the Northport gas station at 10 AM. Signed a hold harmless agreement and headed out for the gold fields.

Well, "Gold Fields" might be overstating the area but it has been a consistent producer for the club over the years. In fact, this is the very area where gold was first discovered in what is now Washington State, in 1854 by Hudson Bay employee Joseph Morel near the mouth of the Pend Oreille River.

Our fearless leader, Johnie Pitman, took us north on the Waneta road to a spot where the river turned and told us that gold is often deposited on the bank the river hits before it is pushed in another direction. He also warned us about the sharp rocks and rough footing at this spot.

He was right about all of this. There was gold in them there rocks. We had all brought gold pans, small picks, trowels etc. Gene Fisher brought some sieves which got the larger pieces of rock out

We are all very thankful to Joe and his faithfulness in producing this every month since 2004. Joe pointed out that anybody that can do Microsoft Word processing and do some writing can do the monthly letter. He is willing to help by doing the printing and stapling.

Johnie brought up that he would like someone to step up and take position of President. It was then talked about appointing a nominating committee. Three women volunteered to meet and discuss nominations before the November meeting. They are Lucy Bristow, Chana McDougald, and Deborah Danielson.

It was then discussed that Thursday, September 27<sup>th</sup> is a planned field trip to the Columbia River up by Northport to pan for gold. Johnie went over what people need to bring and that mainly it would be flour gold that would be found. Johnie said to bring a pan, but if you do not have one, he has extra pans. Also, to bring a wash tub if you can.

Warren Buell donated lapidary magazines. The duplicates will be available for club members and the rest will be sold at the show.

Johnie reported that he received a phone call from Ed Scott saying that he wants to donate equipment to the club. It will be in the November auction.

Chana brought up reimbursing Gene and Johnie for the trailer. It was suggested that the November auction go to reimburse for the trailer. June made a motion to use November auction and it was seconded. Frank also suggested the money that would have gone to rent a storage unit be applied to that as well. June amended the motion to include \$600 per year to go for reimbursement. It was unanimously passed.

It was announced that next month's meeting will be back to 6:00 p.m.

Refreshments were served and silent auction and drawing was held.

The planned program was changed due to malfunctioning of a DVD. Bruce Hurley gave a talk on his trip to Mount St. Helens. It was very interesting with informative observations about that area. *end*

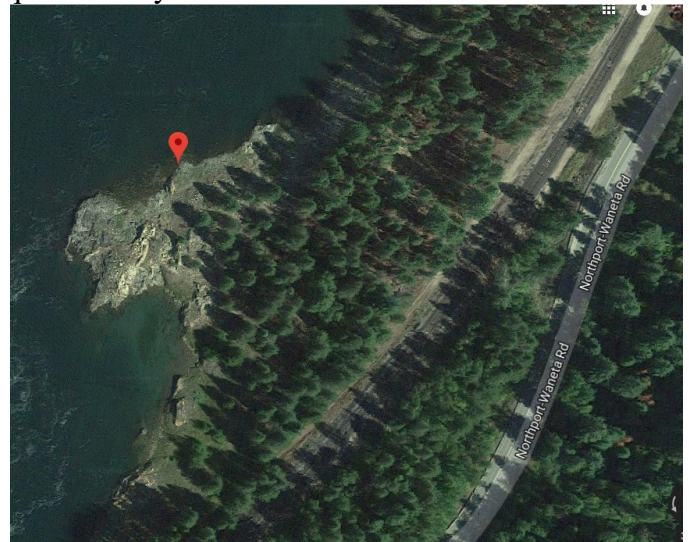
of the sands quickly. Johnie brought some small vials that held the flakes of gold that we found.



[This gold flake sits high and dry in the pan]

The water in the Columbia was running clear and cold but lower than usual. Gene's young friend Patrick Wolf spotted an otter out in the river when we got there. He also managed to pan out the largest flakes of any that I saw. It turned out that having some shallow running water was a big advantage. So was having good rubber boots to stand in that water. After sifting out the largest rocks, you could let the running water swirl out the sand until the flakes were visible.

Having a dropper, turkey baster or syringe was a good idea for picking up the gold and inserting it into the small vials. Another handy item was a large magnet. When mostly black sand was left in the pan, a magnet would pick up the black sand. Getting that sand off the magnet was not quite as easy.



[We panned this area, 48.9738013,-117.6417131]



Note the exit off the highway at the top right corner of the map. There was parking between the highway and the railroad and then a trail down to the rocks. On the down side, a train parked there while people were still out panning and they had to walk around it to get to their cars.



[Young Patrick Wolf getting the job done carefully]

## **Johnie's Jabber**

*by Johnie Pitman*

Johnie's Jabber: The work day went well but turned into more like a work week. The cases have been repaired and the fronts were sanded and refinished. The liners have also been cleaned or recovered. I'm looking forward to the show so we can see them all setup and appreciate the work that went into making them look so great. Thanks to everyone who helped, it was wonderful. If you bought items that were used for restoring the liners or cases and want reimbursed for your expenses give Frank the receipts. The new trailer has been loaded with all the show items. It's ready to be stored until show time. I'm waiting to hear from the Fairgrounds on maybe storing it there in one of their buildings.

On September 27th, 11 of us went gold panning on the Columbia River, no one got rich but it was a beautiful day. Martin Whitney (Marty) lost his balance and fell in the sharp rocks and got some serious bruises and a headache. He was taken to the Chewelah hospital for repairs, but he's tough and is on the mend. While we were panning the train came by and stopped between us and our cars so we had to walk around the end of it. How often does a train stop on the tracks in the middle of nowhere?

The nominating committee has done a great job of finding volunteers for all the positions. The list of nominees is elsewhere in this newsletter. The floor will be open for you to nominate anyone else before the voting in the November meeting. The newly elected officers will take office in December. Good job committee!!

Consider how you might be able to help with the newsletter editor position or show chairman, we will discuss them at the meeting.

The Executive Board which consists of President, Vice President, Secretary, Treasurer, and the three trustees has met to revise the clubs bi-laws and hopefully will have copies available at the October meeting.

Remember dues are due in November, \$20 per family.

The Arden Community Club is holding a BINGO fund raiser on November 3rd at 1PM until 4PM with proceeds going to help keep the Arden Hall available for community use and event rental. That's where we meet so we need to participate as much as possible. If you can, plan on a fun outing and help keep our meeting place open.

## **Rock Club Work Day**

*by Jim Peters*



[Gene Fisher sanding the cover of a show case]



Members met to renovate our show cases on September 19th at Johnie Pitman's home. Male members Bruce Hurley, Gene Fisher, Johnie Pitman, Frank Stratton, Rick McDougald, Mike Wood, Larry Engle, and Jim Peters assembled the cases and made repairs to fit and numbered the parts. They sanded the face plates and stained them so they will all be the same color. We loaded the cases into the carts and moved them into the new trailer. Some work was involved to adjust the trailer to hold the cases securely.



[A new trailer to hold our cases until the rock show]

Lady members Holly Cupp, Sheila Stratton, Sheila Stratton and Jan Hurley were busy covering the liners with new cloth.



Panorama Gem and Mineral Club News October 2018

## Officer Nominations

*by Deborah Danielson*

A second and final meeting was conducted by the Nominating Committee members Luci Bristow, Deborah Danielson, and Chana McDougald. The following club members are being proposed for these positions :

	CURRENT	2019
President	Johnie Pitman	Rick McDougald
Vice Pres.	Bob Bristow	Bob Bristow
Secretary	Sheila Stratton	Sheila Stratton
Treasurer	Frank Stratton	Frank Stratton
Trustee	Bill Allen	Jim Peters

The other 2 trustee positions are not up for replacement this year.

Thanks to everyone who worked on this committee. Special thanks to Rick McDougald who has already started work on making a smooth transition for the new leadership. The big jobs of running the Rock Show and writing the newsletter are still being worked out.

[Rick McDougald]



## Scheelite and the Germania Mine

*by Joe Barreca*



[Greg Van and Scruffy looking for Scheelite]



Scheelite is a calcium tungstate mineral with the chemical formula  $\text{CaWO}_4$ . It is an important ore of tungsten. Well-formed crystals are sought by collectors and are occasionally fashioned into gemstones when suitably free of flaws. [Wikipedia](#)

Calcium, Tungsten and Oxygen make up the crystal Scheelite. The richest tungsten mine in Washington State and in all of the United States at the end of the 19th Century. That is when John Horn brought samples to the St Louis Exposition of 1894. Horn originally named the mine, the Bismarck, so he must have had some German affiliations already. At the Exposition representatives of the German Krupp Gun Works liked the very pure deposit and had German intelligence officer, Wilhelm Schenk buy the mine. Schenk renamed it the Germania and soon had up to 300 men working to improve its production.

The ore was used as in an alloy producing large guns that were then fired back at the British and other nations in World War I. When the United States joined the war, it was taken over by the U.S.

There are articles about the Germania in this newsletter in 2005, 20013, 2014 and 2016. You can just go to the website, [PanoramaGem.com](#) and type "Germania" into the search box to find links to all of those articles.



[The rocks we found in ordinary light]

The reason for this article and a recent trip to the Germania was a renewed effort on the part of Greg VanWeerthuisen and myself to find Scheelite. So what is the big deal with Scheelite? It glows blue under short and medium wave ultraviolet light. That makes it a rarity. Finding minerals that glow

Panorama Gem and Mineral Club News October 2018

green, orange, red and yellow under UV light is more common. So if you are a dedicated collector of fluorescent rocks as is Greg, you want to find some samples of Scheelite.



[Those same rocks under UV]

The Germania is over 8 miles out on back roads east of Fruitland. I've been there 5 times and



still like having my GPS-responsive maps with me to chose the best roads. The coordinates are: 48.0085295,-118.1017624 Some of the mine is private property. Most is BLM land. All of it was burned over in the Carpenter Road Fire. The best rocks have black Tungsten crystals that look like Tourmaline.

### Membership Dues:

\$20.00 per household per year is due to the club Treasurer Frank Statton (address below) on the third Tuesday of November for regular members.

Webpage: <http://panoramagem.com/>

Contact: Johnie Pitman, President, 509-413-2768.

We, **The Panorama Gem and Mineral Club**, are a multi-faceted group of mineral-minded people. Our proud members include some real gems, a few fossils, and even some diamonds in the rough. A few have lost some of their marbles, but they know where to get more! A few need to polish their coordination because they are always tumbling! And some are miners who use the “silver pick” as their tool of choice! It should be crystal clear, that we all enjoy this unique conglomeration and above all else we strive to **HAVE FUN**. And we never throw stones (away).

### Refreshment Schedule for 2018

Last names that begin with the letters posted bring refreshments for that month

January – W, A, B, C      February – D, E, F, G

March – H, I, J      April – K, L, M

May – N, O, P      June – Q, R, S, T

July – W, A, B, C      August – Club Picnic

September – D, E, F, G      October – H, I, J

November – K, L, M      December – Christmas Party

Call Sherryl Sinn at [509-684-6093](tel:509-684-6093), if you have any questions. Thanks for helping.

### October Meeting 6 PM

The club will meet at its winter schedule time, 6PM. There will be some of the Scheelite rocks to see under UV light. We will be talking about the nominations and the empty positions the club needs to fill for next year. We will also have some entertainment and eat great snacks as usual. Hope you can come.



### \$100,000 Meteorite Doorstop

A Michigan man recently learned that this 22-pound rock he used for decades as a doorstop on his farm was in fact a meteorite worth over \$100,000. The man obtained the meteorite in 1988 when he bought a farm in Edmore, Michigan. As the farmer was showing him around the property, they went out to a shed. The man asked about the large, odd-looking rock that was holding the door open. “A meteorite,” the farmer said matter-of-factly. He went on to say that in the 1930s he and his father saw it come down at night on their property “and it made a heck of a noise when it hit.”

### Panorama Gem and Mineral Club: Organizational Chart

Officers:			
President:	Johnie Pitman	701 B Williams Lake Rd, Colville, WA 99114	509-684-8887
Vice-President:	Bob Bristow	PO Box 1165; 2567 Mud Lake Rd. Chewelah WA 99109	509-935-4375
Secretary:	Sheila Stratton	79 Mary Ellen Rd, Kettle Falls, WA 99141	909-207-8506
Treasurer:	Frank Stratton	79 Mary Ellen Rd, Kettle Falls, WA 99141	909-207-8503
Trustee 2:	Jim Peters		
Trustee 3:	Dennis Gibbens	827 Hwy 20 E, Colville, WA 99114	509-684-3532
Trustee 1:	Sherryl Sinn	725 S. Chester, Colville, WA 99114	509-684-6093
Committee Chairs			
Program Coordinator:	Bev Bockman	1750 N Havichur Loop, Post Falls, ID 83854	208-773-5384
Hospitality:	Sherryl Sinn	725 S. Chester, Colville, WA 99114	509-684-6093
Club Shop:	Gene Fisher	295 Gold Creek Loop Rd, Colville, WA 99114	509-684-8546
Historian:	Carol Price	PO Box 77, Laurier, WA 99146	509-684-2857
Newsletter:	Joseph Barreca	2109 Hwy 25 South, Kettle Falls, WA 99141	509-738-6155
Show Chair	(vacant)		