

Place: Arden  
Community Club  
Hall Rd  
Arden, WA



Time: 7:00 PM  
Third Tuesday  
Each Month  
(Jan.-Dec.)

## The Panorama Prospector

April 2015

### Minutes for March 17th, 2015

*By Anni Sebright*

The St. Paddy's Day meeting was called to order by President Bruce Hurley.

Several new members were introduced and welcomed.

Our resident honored "Rockhound of the Year", Johnie Pitman, was congratulated and recognized for years of sharing his knowledge and passion for rockhounding (and years of toiling in the trenches.)

Attendance at the Rock Show was closely estimated at 2,000. Bill Allen is thanked for all the work that goes into making a successful rock show. Thanks, too, to Johnie and Ginger Pitman for being Bill's right and left hand. Bev Bockman set her rooster to crow at 4 A.M. so she could make her drive from Post Falls to Colville to help with the show. Bob rode shotgun. Gene Fisher did such a good job cleaning the bathrooms that he earned us a discount on our rental fee. Thanks, Gene.

The winner of the grand prize this year was Grant Swim.

Bob and Luci Bristow are recouping from their bout with R.S.V. We took Luci's name in vain and volunteers for snacks and juice for April are Peggy Martell, Kathy Fritz and Matt Harbin.

Johnie suggested a club expenditure of around \$250 for a roll of the plastic used in skirting the tables for our next show. That price will buy about 300 yards and with careful use will last about 3 years. The expenditure was approved. We borrow 10 display cases, tables and lighting from the Rock Rollers and have as our goal to own our own within the next few months. We hope to have 25 display boxes which would give us a spare.

*continued Page 2*

### The 490

*By Joseph Barreca*



[Dan Lutjemeier points out the dig site on FS Rd 490]

It all started at our rock show when this guy brought in a box of rocks that blew my mind. He said he found them up on Boulder Pass between Curlew and the Kettle River. In the box were solid tourmaline crystals, quartz crystals, feldspar crystals and double terminated smoky quartz crystals - all from the same place. And that place was nearby and had never been visited by anyone I knew. This looked like the greatest local rock site ever and I could hardly wait to see it.

So on April 11th I met Dan Lutjemeier at the top of Boulder Pass and we went to the site, which is a half mile down Forest Road 490 about a mile west of the summit. I had checked it out the week before to see if the snow had cleared. Dan discovered the site himself a year or so ago. The road was built many years before and Dan was driving up it to look for firewood when an unlikely sight struck his curiosity. The road is cut through massive granite base rocks with huge granite boulders on the tops of the cliffs. At one section of the road, the granite interfaces with a body of mineralized rock that looks to have iron with other elements in it.

Date	Place	Rocks	Meet
April 18th	Saddle Mtn	Petrified wood	Westbound Sprague Lake Rest Area at 9am, and at the Shell station on the far (East) side of Mattawa at 11:30 (509) 251-1574.
May 3rd	Flagstaff, Northport	Barite Crystals	Meet at Harvest Foods at 9 am
(Late) May ??	Clarkia, Id	big garnets	\$25 pay for dig
June 13th	Keystone/Edna mines	Copper, Serpentine, Pyrite cubes	Meets at Safeway in Chewelah at 9am
June 20-24	McDermitt	Jasper/Agate/Petrified Wood	with Spokane Club
July 10-13	Clarkia, Id	Garnets/Quartz Crystals	with Mineral Council
July 19th	Horseshoe Mtn	Quartz Crystals/Florite	Meet at Intersection Hwy 20/Hwy 21 at 10am
Aug	Rock Candy Mine	Bob Bristow is contacting Trail Club for possible field trips and checking on Dates and times and trips to be determined.	
Sept 11-14	Redtop Mtn in Wenatchee	Geodes	with Mineral Council
Sept 25-28	Little Naches River Yakima	Geodes	with Spokane Club

*Minutes from page 1*

Suggestions and ideas for improving the rock show were discussed. Some of the ideas presented were:

1. Choosing our theme months ahead, maybe August, to give us more prep time.
2. Featuring local rocks, minerals, gems from the surrounding area to generate interest.
3. Enlargement of the black light area.
4. More information out to the schools to encourage more student interest and participation.
5. Changing the layout around the pillars for more and better space for browsing.
6. Changing the timing on the announcements so they don't overlap.

We will retain the donated black light for use in the black light area. Other donated pieces will be auctioned, raffled and used for door prizes to benefit the scholarship fund. Johnie will bring some of the bigger pieces for members to examine, and a May auction of these beauties will go into the scholarship fund. Having two auctions a year, May and November, was suggested as money-making events. We do have six \$500 scholarships to fund, so bring your checkbooks and big bucks April 21st.

Anyone wishing to learn the Viking knit chain, plan to come to the April meeting at 6 P.M. as Sharon Borgford will demonstrate the fashioning of the chain. If there are people interested, a workshop will follow at a later date.

Rita Cordry won the door prize drawing for March.

Our program for April will be Part 2 of the February program, identifying minerals.

*end minutes*

*The 490 continued*

On that first day, looking along the roadbed for anything interesting, Dan started finding smoky quartz and other crystals. He found some tiny examples of the same kinds of crystals when we went there last week.

As we scratched our way through the rocks and dirt alongside the highway, Dan told me how he had found most of the interesting rocks higher up on the cliff. He followed a seam of smoky quartz down the cliff face clearing away the overburden as he went. Eventually he was in a hole 3 feet deep or more on the uphill side of the road. He seemed to be digging out the remains of a significant vug broken open by the road construction and spread out along the road as fill in both directions.



The biggest problem with this discovery was that in order to dig up the best stuff, you would have to destroy the road, something neither of us wanted to do.



[Dan's original box of rocks]

Another issue was that Dan told a friend about the dig, many friends actually, and it had been gone through several times. The hole Dan dug beside the road was filled in. The seam down the rock face had more overburden sloughed in over it. And we only had two hours to try and find something else worthwhile before we both went to a memorial service for a friend who was also a rockhound.

In the end, we didn't bring much back from this adventure. I have some fairly nice feldspar crystals, some broken pieces of smoky quartz, a few tiny tourmaline crystals and a very small clear quartz point, most of them donated to me by Dan. He also gave a nice double terminated smoky quartz with tourmaline growing on it to the widow of our rockhound friend at the memorial service that afternoon.

The take-away really is not a huge productive site or a great personal collection, it is the knowledge that great things are still out there. You just have to keep your eyes open.

## Rock Sale in Pend Oreille

Brian Peck, Pend Oreille Rock and Gem Club's president, is moving to Portland by May 1<sup>st</sup>. In order to lighten his load, he is selling some equipment and specimens ASAP. Here is the list.

Item	Price
Rock chisel - brand new	\$10
20" Lortone Vibrating flat lap w/ 2 pans	\$275
Wire Screens - 2	\$3 each
Pick Axe	\$5
Baby jogger with rock probe	\$20
Petrified wood - 130 lb piece	\$40
Petrified wood rough	\$5-\$20 each
Obsidian rough	\$1-\$5 each
Pumice rough	\$1-\$5 each
Thundereggs - cut	\$1-\$5 each
Misc. rough	\$1-\$10 each

There is also a list of household items for sale. To reach Brian, use [peckbrn@hotmail.com](mailto:peckbrn@hotmail.com), his email address, or phone: [509-671-2585](tel:509-671-2585)

## Rock Show in the News



### Seeing the light at the Gem and Mineral Show

Panorama Gem and Mineral Club Treasurer Johnie Pitman holds a phosphorescent rock under a black light, causing it to glow at last Friday's annual gem and mineral show. According to Pitman, phosphorescence is a phenomenon exhibited in several fluorescent minerals where the mineral continues to glow even after a UV light source has been removed. The glow slowly fades, and is no longer visible to the eye. The two-day event took place at the Stevens County Ag. Trade Center and featured a variety of different rocks and gems. Admission is free, but donations go toward raising money for the club to give scholarships to students at Kettle Falls, Colville, and Chewelah high schools. Photo by Sophia Aldous.

Bill Sebright forwarded this image from the Colville Statesman Examiner. We didn't get a whole article, but we did get this picture and caption.

## Geology Field Trip



Andy Buddington, who led a couple of fascinating field trips in Bonner, Pend Oreille and Stevens Counties in 2013 has agreed to lead another in the CDA mining district this summer. Sunday July 19th sounds like the likely date. Keep your eyes on this newsletter and our website for confirmation of that date.

## Chips From The Outcrop

*By Bruce Hurley*

Several times recently, I have been on field excursions in the inland Northwest to revisit localities I had last been to several decades back. Back in those days, there were no Google Earth or Landsat images available to locate features in the field. Nor were Ground Positioning Satellite (GPS) location devices available, prior to the mid-1990s. However, the U.S. Geological Survey topographic maps of the day were updated frequently and quite accurate for showing roads, jeep trails, buildings and old mines. Since places were easy to find on the maps, I seldom kept detailed road logs for most places I visited. From some of my recent trips, I now realize that was a mistake.

First of all, I badly underestimated just how fast nature can reclaim old buildings, tailings piles, and unused roads in this area. On a trip to

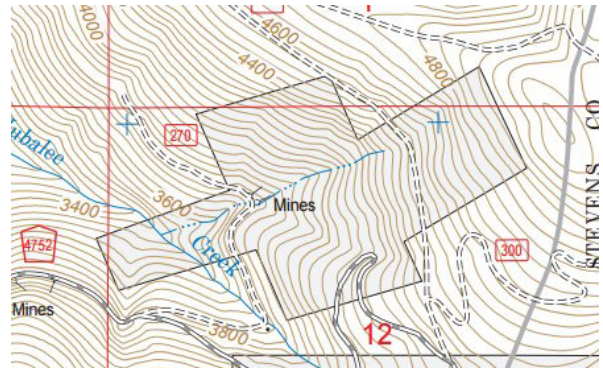
Panorama Gem and Mineral Club News April 2015

- 4 -

collect pyritized graptolite fossils near Ledbetter Lake, north of Metaline, I did what I had done in the '70s and '80s; drive until you see the lake, then pull off the highway and collect. Well, by 2011 there was a minor problem with that method; the trees between Ledbetter Lake and the highway have grown so high the lake is all but invisible. In a recent trip to the Sheep Creek area northwest of Northport, I could not locate an old lead prospect for similar reasons. Not only was the area of former scrub brush sporting trees twenty feet tall, but some of the old trails have now been obliterated by a local racetrack! The entire "trail" network is different there than before, as in many other places, especially those which have been logged.

To make things even more difficult to locate, for areas of wilderness or potential wilderness designation, old cultural features, especially those related to mining, have been "cherry-picked" off newer versions of topographic maps. This "see no evil" approach has made some topographic maps less useful than before, so do not throw out your old quadrangle maps. They may show old cultural detail newer ones do not.

The moral of the story is to use modern technology, especially GPS location and aerial imagery, along with maps, to find localities. Once you locate them, make a good record of where these places are and how you got there. Being able to revisit known rockhounding sites is especially important in the 21<sup>st</sup> Century, as there is little new mining or quarrying, and further restriction of access to private and government-controlled lands appears likely to continue, in the future.



[The Forest Service has downloadable topo maps of our area. These new maps can show you where you are on a cell phone. If your phone has internal GPS. They will do that even without cell access. Check our [PanoramaGem.com](http://PanoramaGem.com) for a link.]



## Early Trip to Saddle Mt.



[ Digging near the Radio Tower on Saddle Mt.]

Early visitors to the Saddle Mt. petrified wood site were not disappointed. Merrill and Anne Ott and Sharon Borgford found a hillside warmed by the sun, with arrow-leaved balsam root flowering and plenty of places to dig.

You might enjoy much the same scene with a larger bunch of people if you make it to the trip on April 18th with the Spokane Club (Westbound Sprague Lake Rest Area at 9am, and at the Shell station on the far (East) side of Mattawa at 11:30. Contact Mike Shaw [\(509\) 251-1574](tel:5092511574).) The Pow Wow club should be there too.

Merrill described it like this: "We did go to Saddle Mountain – just a few hundreds of feet short of the antennae farm on top. There were two large dig sites where we spent our day, and there was a lot more material on the ground as we hiked up towards the top of the ridgeline to see what lies to the north, up the Columbia River. What a site!" (*More next month.*)



[Anne Ott working Saddle Mt.]

## Rogue River Rock Show



<b>Fri. April 24</b>	<b>Sat. April 25</b>	<b>Sun. April 26</b>
<b>9:00 – 5:00</b>	<b>9:00 – 5:00</b>	<b>10:00 – 4:00</b>

**Dealers - Silent Auction - Door Prize – Exhibits  
– Demonstrations – Raffle - Kids Games – Food**

**FREE ADMISSION**

**FAIRGROUNDS PAVILLION**

**FRIDAY ONLY**

**Grants Pass, Ore**

**Sat & Sun Admission \$1.00**  
**1720**

**Contact: Janet 541-415-**

**Children 11 and under FREE**

[www.roguegemandgeology.com](http://www.roguegemandgeology.com)

## Reward for Stolen Minerals

For those who don't know, one of our friends and long-time vendors had several thousand dollars in gold, gold nuggets, silver, coins, jewelry and misc. items stolen when his truck was broke into while he ate dinner on the first night of our show. I have attached a list of some of the items taken. If you hear of anyone suspiciously trying to sell, trade or asking how to sell/trade or otherwise dispose of gold, please call the Coeur d'Alene Police Department at 208-769-2300, ask for dispatch and tell them you have supplemental information for Case #15C08004.

The NorthWest Gold Prospectors Association is offering a \$1000 reward for information leading to the arrest and conviction of the low life perpetrator(s) of this crime. Please forward this to as many people as you can to spread the word.

Bob Lowe, President Eagle City Mining Company, Ltd which owns & operates Eagle City Park & Gold Fever Mining Supply 208-699-8128  
Watch YouTube: <http://youtu.be/0lzZnkOJaVk>

A list of stolen items will be posted on our Panorama Gem and Mineral Club website.

### Membership Dues:

**\$15.00 per household per year is due to the club**

**Treasurer** Johnie Pitman (address below) on the third Tuesday of November for regular members.

Webpage: <http://panoramagem.com/>

Contact: Bruce Hurley, President, 509-413-2768.

We, **The Panorama Gem and Mineral Club**, are a multi-faceted group of mineral-minded people. Our proud members include some real gems, a few fossils, and even some diamonds in the rough. A few have lost some of their marbles, but they know where to get more! A few need to polish their coordination because they are always tumbling! And some are miners who use the "silver pick" as their tool of choice! It should be crystal clear, that we all enjoy this unique conglomeration and above all else we strive to **HAVE FUN**. And we never throw stones (away).

### Stone Rose Fossil Center Annual Membership Dig

The Stone Rose Fossil Center will be hosting its annual membership only fossil dig April 24th to April 26th. This is a special dig after the Boot Hill Quarry has been cleaned up and new faces of rocks are exposed. There are several other events scheduled as the fossil center opens for the season. (*See details to the right.*)



### Viking Chain Class

Plan to come to the April meeting at 6 P.M. to hear Sharon Borgford demonstrate fashioning a Viking Knit chain.

The program is a video "Idaho Geology: Our Desert National Parks."

There is a link to a video of the Geology of the Liberty Mine, which is near Blewett Pass, by Rob Repin who operates a mine just south of Liberty and is a Central Washington University professor.

The 2015 Membership weekend is coming up soon! Join us here in Republic for the renowned "**Members Only**" dig April 24<sup>th</sup>—26<sup>th</sup>, when members will be awakening the Boot Hill quarry from its winter sleep. Early indicators from the site look very promising!

If you aren't a member yet, sign up for a membership online, <http://stonerosefossil.org/become-a-member/>, or when you arrive in Republic, so that you can participate in mining the first finds of the season...perhaps a beautiful part/counterpart rose leaf (*pictured lower right*). As in the past and on this weekend only, you will be allowed to keep up to six fossils each day.

**Friday evening** have a delicious dinner at Freckles' Gourmet BBQ early; then, bring your beverage and join us in the meeting room at 6:30. Gregg Wilson chronicles his DIG Field School" (Discoveries In Geosciences) adventure at Hell Creek Formation with a presentation entitled, "What I did on Vacation". Get up close and personal when you examine his turtle "Meg", a wonderful treasure.

**Saturday evening** join the Stonerose Board of Directors for a social hour from 5-6 pm at the Catholic Parish Hall and have some bidding fun at our silent auction. The annual membership meeting will be held at 6 pm with a Mexican dinner to follow at 6:30. Dinner tickets will be available for purchase for only \$10. We highly encourage reservations to help us with our planning!

Following dinner see what's new in the insect world. At 7:00 Stonerose members welcome Dr. Bruce Archibald, Simon Fraser University, as he presents the first fossil stickbug ever found at Republic, a new genus and new species that he and his coauthor Sven Bradler from Germany named *Eoprephasma hichensi* in honor of Keir Hichens, the young Stonerose visitor who found the fossil.

### Panorama Gem and Mineral Club: Organizational Chart

<b>Officers:</b>			
President:	Bruce Hurley	10617 W. Lakeside Lane, Nine Mile Falls, WA 99026	509-413-2768
Vice-President:	Bob Bristow	PO Box 1165; 2567 Mud Lake Rd. Chewelah WA 99109	509-935-4375
Secretary:	Anni Sebright	POB 293, Clayton, WA 99110	509-276-2693
Treasurer:	Johnie Pitman	701 B Williams Lake Rd, Colville, WA 99114	509-684-8887
Trustee 1:	Gene Fisher	295 Gold Creek Loop Rd, Colville, WA 99114	509-684-8546
Trustee 2:	Bill Sebright	POB 293, Clayton, WA 99110	509-276-2693
Trustee 3:	Becky Dobbs	968 Phillpott Rd, Colville, WA 99114	509-684-6931
<b>Committee Chairs</b>			
Program Coordinator:	Bev Bockman	1750 N Havichur Loop, Post Falls, ID 83854	208-773-5384
Hospitality:	Luci Bristow	PO Box 1165; 2567 Mudd Lake Rd. Chewelah WA 99109	509-935-4375
Club Shop:	Scott Jackson	1028 Old Hwy 12 Mile Rd, Colville, WA 99114	509-684-6371
Historian:	Carol Price	PO Box 77, Laurier, WA 99146	509-684-2857
Newsletter:	Joseph Barreca	2109 Hwy 25 South, Kettle Falls, WA 99141	509-738-6155
Show Chair	Bill Allen	2633 Highline Rd, Chewelah, WA 99109	935-8779, 936-2446