

Place: Arden
Community Club
Hall Rd
Arden, WA



Time: 7:00 PM
Third Tuesday
Each Month
(Jan.-Dec.)

The Panorama Prospector

April 2012

Minutes March 2012

By Ginger Pitman

Johnie opened the meeting with 38 members and no visitors present. Volunteering for refreshments next meeting are the Martells, Bristows and Meyers; thank you.

Upcoming events were given, including the Rock Rollers' Spokane Show May 4-6; the NFMS Annual Show and Meeting at Kennewick May 18-20; the Buchanan Thunderegg beds being open May 25-28 at Burns, OR. Information on the 4th annual rock tumbling championship is available if anyone is interested.

Sylvia gave the treasurer's report.

Bill gave the show report, looks like we are almost ready. There are 4 cases to fill.

Chairmen of our committee to find a different place for the show gave out a written report of the progress so far.

Dave P. gave us an example of the poor help given to people who want to go prospecting or use the public lands. The club has a membership in a lobbyist group to let our voice be heard.

Steve Fox gave a shop report, the 10 inch saw needs a new blade and will be replaced with an American made one. Steve Fox will be leaving us, as his services are needed by family in AZ and so Scott will need help keeping the shop open and in good repair. Feel free to volunteer.

The club will need tumbled rock for next year; the club will furnish the rough grit. We will need grab bags sewn, if you can do any of these let us know.

Joe was contacted by a man wanting to buy a garnet as a memento of his brother.

The club voted to buy the large Polychromatic Jasper as our grand door prize.

Peggy M. won the meeting's door prize. After the silent auction and refreshments; the program for the night was a film by U S Forest Service called "Stay Out and Stay Alive."

Treasures Far and Wide

By Joe Barreca

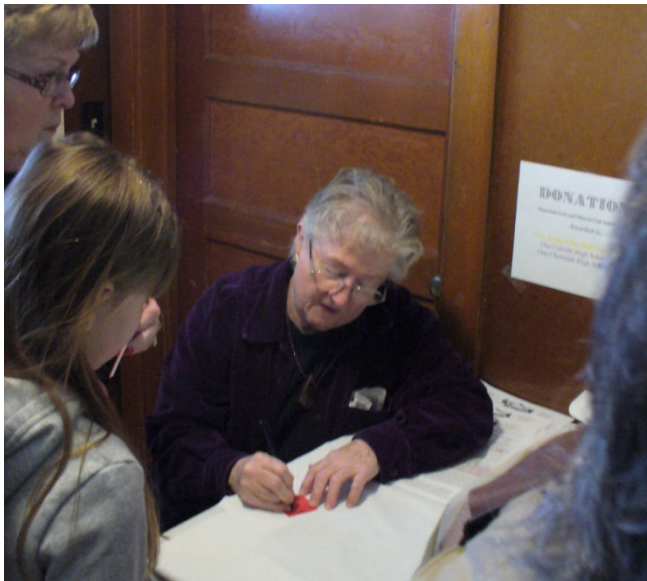


[Livingston Vendor Display]

The Panorama Gem and Mineral Club's 2012 Rock Show is in the books. Well the accounting books anyway. I'm pretty sure we didn't make the history books or even the local papers. So to remedy the situation, I am writing this article to show what a great bunch of club members we had putting the show together this year. There were a good number of vendors and several of them were actually club members. Sherry Bamberger, Nena Wright, Brian Martell and Bruce and Jan Hurley.



[Brian Martell at his table on the sales floor]



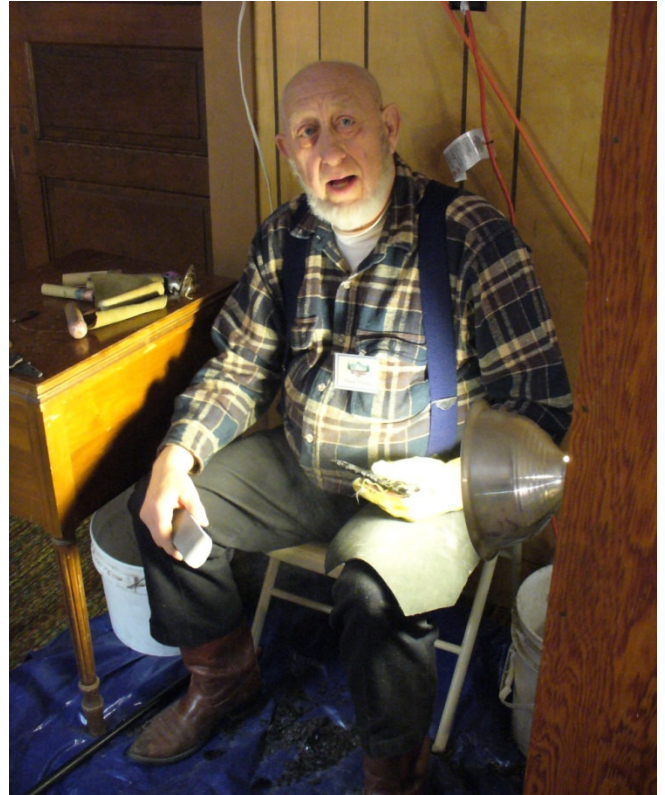
Every show needs a greeter and someone to sign people up for the door prize. Ann Berger is holding down that position in this picture. We usually have several people to help out at the door but were a little short this year. Luckily Ann gave up her vendor spot and helped out front this year.



Most of the club members were down stairs. The first one you saw was Arden Fritz. He took over for Rex Barrans and Scott Jackson, who have run the Wheel of Fortune for years. This is a very popular place for kids and adults trying to help kids have fun. It also is the table where you can buy bags of tumbled rocks. We usually sell hundreds. A popular next destination from there is often the Black Light Cave to see if any of them glow under UV light.



In the corner from the Wheel of Fortune, Gene Meyer set up a Genie rock polishing wheel. He had a lot of blank cabuchons cut and polished them up for people all day long. That was a great addition. There were a lot of people happy to watch and even happier to take one home.



Right next to Gene, was Chuck Prentice. He was showing folks how to make the most of rocks the really old-fashioned way by knapping them into arrowheads and knives. Knapping can create edges on Obsidian sharper than a scalpel. So in a way, this was hazardous duty. But Chuck had a heavy glove and leg protection. He even made sure the shards fell on a tarp beneath him.



Bev Bockman kept the silent auction going and eventually auctioned off this giant piece of wonderstone, a kind of Rhyolite.



Steve Fox offered prizes and a lot of free advice to kids trying out the ring toss. The first piece of advice is that you have to smile. That worked pretty well. So did the second rule of ring toss, throw the ring up in the air so it can come down on a peg. That worked well too and kids walked away with a lot of rocks, toys and smiles on their faces.



In the far corner of the basement was the mysterious and very popular Black Light Cave. It was designed built and staffed by Bill Allen, with some expert help from Rita Cordrey. I called it Bill's tinker-toy set. It was built with PVC pipe that is held together with duck tape and covered with black plastic. The whole thing breaks down into a couple bundles of pipes and parts. Very handy! This year Bill added a new feature, a box where kids could stick a plate full of stones from the grab bags and see if they would glow under ultraviolet light.

I don't have pictures of the rock displays themselves. We filled all of the light boxes with great displays this year. You can check back on the February newsletter to see what the good ones and the not-so-good ones look like. There was a general agreement that the article in the newsletter on how they were judged and how to pick and label the rocks in them had a good effect on the quality of displays this year. Every one had beautiful and unusual rocks often with a crowd of people standing around looking

at them. They certainly were worth the price of admission. Actually the show was free, but don't be surprised if we move it to a new venue and ask adults for a couple bucks to get in next year.



No show would be complete without Dave Paquette and his array of big rare rocks and homemade rock hounding equipment. This is a picture of Dave with a special edition "Super Sucker". By using a clear plastic tube, Dave made this demonstration model that lets you see the Super Sucker in action. It pulls in rocks and water from cracks along a streambed, squirts out the water and leaves the gold and associated sand at the bottom of the tube. From there you can pan out the gold and check to see if you are getting black sand.



[This new hydrology table was popular & educational]

Johnie's Jabber

By Johnie Pitman

Wow!!! I think the show went really well, thanks to all of you that put in so much effort. I'll not try to mention the jobs that each of you did, but we need to remember that Bill Allen did a great job of organizing and putting things together. THANKS BILL!!!

Also a big thanks to the Summit View 4H Club for doing a really good job with the food, it was outstanding.

The Grand Prize was won by Terrah Hatch of Colville and has been delivered, she was very surprised. Everything else has been stored except the things that we borrowed from the Rock Rollers and that will be returned on May 1st.

The relocation committee chairman Arden Fritz will present the pros and cons for possibly moving the show to the Fair Grounds for next year and probably bring it to a vote, so be ready to voice your opinion.

The program will be about inclusions in gem stones and will be presented by Leon Agee from the Rock Rollers, don't miss it because it will be very interesting.

Damage Report

By Brian Waters

The WSMC is asking that people keep a copy of this Damage Report in their vehicles so that they may report people that are involved in illegal or unethical rock collecting. It might be a good idea to keep a copy of it with a copy of Fish & Gold, the permit book, which anyone rockhounding in the state of Washington should have in their vehicle at all times.

(The Damage Report form is posted on our website, www.panoramagem.com). Brian Waters is president of the Washington State Minerals Council and trying to establish a good working relation between rock clubs and government agencies.)

The reason for the Damage Report is that in recent years our community has seen quite a few collecting sites closed to us due to a very small amount of people damaging property and ecosystems while collecting rocks and minerals. For the most part, people that are doing this sort of rock collecting do not belong to rock clubs, yet

their unethical and sometimes illegal collecting practices affects us all.

At a time when the WSMC the PSK and other groups are attempting to open up new areas for us to collect on it is imperative that rockhounds step up and start policing our own hobby.

Evans Quarry Revisited

By Joseph Barreca



Look for this old cement tower when you are travelling up Highway 25 just north of the Evans Campground. When they were building Grand Coulee Dam, the world's largest concrete structure at the time, the demand for limestone, (calcium carbonate), to make cement was huge. A lot of it came from quarries near Evans.

Over the years our rock club has been poking around these old quarries looking for calcite crystals, pyrite, barite and other treasures. In last May's newsletter, there was a short article on a new place along the highway where club members found large calcite clusters in a seam of rock. It is right across from these old concrete bunkers. Steve Fox and I went to see what else is there recently.

We found a new rock slide from that same formation with large faces of dogtooth calcite. It is on the back side of some huge boulders that sloughed off the cliff right next to the road. I don't know how you would collect it without ruining the cluster. You would need heavy equipment and a big rock saw or cement saw. Please don't try unless you are sure you can. But they are just the first of several interesting things at the site.



[Here is one of the faces of calcite crystals.]

There may be more collectable pieces in this pile. We didn't have much time and Steve is taking off for Arizona soon, so he doesn't need more rocks.

We had come to see if there was more to the quarry just above the cliff along the west side of the highway. We got up there easily enough and it looked like more of a loading area or staging area to load rock onto rail cars. The railroad runs along the west side of the highway. But a little exploration offered another explanation for the setup. Behind some brush and boulders was a giant adit. We are talking about an opening large enough to drive a truck into.



[The tunnel opening]

Of course after last month's meeting with the video on danger underground, we were not about to explore, but a lot of rock came out of this hole and it must have been more than limestone, because there are open pit quarries for that – safer and less expensive to mine- all around this adit. It doesn't show on my maps but may be documented somewhere in the DNR records.

It does offer an interesting mystery. There are more quarries up the hill, but they were out of range for us and probably accessible by road. Usually an adit like this makes it easier to extract ore from a deposit deep in the hill. The deposit could outcrop much further up. So as always, there is more exploration to be done.



The closest we got to gold, were patches of buttercups like these. Soon there will be big yellow Arrowleaf Balsam Root flowers all over this hillside. It's time to get out and see what is out there!

Merit Badges

By Joe Barreca

Wasn't it fun having all of those kids come to the rock show? What if we could teach kids about rocks and they could earn merit badges in the process? The America Federation of Mineral Societies has a program just like that.

The program consists of an FRA Membership patch, 20 badges (Rocks & Minerals, Earth Resources, Fossils, Lapidary Arts, Collecting, Showmanship, Communication, Field Trips, Leadership, Earth Processes, Earth in Space, Gemstone Lore & Legend, Stone Age Tools & Art, Gold Panning & Prospecting, Rocking on the Computer, The World in Miniature, Special Effects, Fluorescent Minerals, Reaching Across Generations, and Maps), and a "Rockhound Badge" for kids who earn 6 of the 20 badges. Kids earning all 20 badges are awarded an AFMS cloisonné pin. A 223-page guidebook describes and outlines requirements for each of the 20 badges. There are 118 activities to choose from, or about a half dozen activities per badge, with kids required to complete only 3 activities to earn any particular badge.

Membership Dues:

\$15.00 per **household** per year is due to the club Treasurer Sylvia Allen (see below) on the third Tuesday of November for regular members.

Webpage: www.panoramagem.com

Contact: Johnie Pitman, President, 509 684 8887.

We, **The Panorama Gem and Mineral Club**, are a multi-faceted group of mineral-minded people. Our proud members include some real gems, a few fossils, and even some diamonds in the rough. A few have lost some of their marbles, but they know where to get more! A few need to polish their coordination because they are always tumbling! And some are miners who use the "silver pick" as their tool of choice! It should be crystal clear, that we all enjoy this unique conglomeration and above all else we strive to **HAVE FUN**. And we never throw stones (away).

Martell's Rock Shop

2 Baxter Lane
Kettle Falls, WA 99141
509-738-3041
509-675-0390

bkmartell@hotmail.com



**Rocks, Slabs,
Cabs,
Jewelry...
Tumblers,
Grinders,
8" & 10" Trim
Saws**



**Mineral Identification
Mineral/Mine Locations**

Bristow Enterprises

PO Box 1165
Chewelah, WA 99109
Bristow@theofficenet.com

www.minrils.net
www.Mineral-Software.com

News and Notes

The annual rock show is over. The club showed up in force again to make it a big success. It's that time of year when rock hounds who have been inside all winter start thinking about field trips. We need to put a schedule together ASAP. If you have ideas, desires for rocks of a certain kind, or places you just think we should check out, now would be a good time to talk about it. We can start at our meeting Tuesday the 17th, 7 PM at the Arden Community Center. You can also email Joe.Barreca@gmail.com

Jewelry Repair & Custom Orders
10% off for cash
Finest Quality Vitamins & Herbals Homeopathics Aromatherapy
Mail Orders Welcome!

SAGO
NATURALS & MORE
SYLVIA ALLEN, C.H., M.H., C.N.
"LOOK GOOD OUTSIDE, FEEL GOOD INSIDE"

Jewelry
Books
FACETED & Non-faceted Gemstones

Hours: 9 to 5:30 Tues. - Fri.
Saturday 10 to 5 Closed Sunday & Monday
Phone 509-935-4388
Toll Free 877-935-2633
110 E. Main, Chewelah, WA 99109

This newsletter is published by the Panorama Gem and Mineral Club. Editor: Joe Barreca, 509-738-6255, joe.barreca@gmail.com.

Panorama Gem and Mineral Club: Organizational Chart

Officers:			
President:	Johnie Pitman	701 B Williams Lake Rd, Colville, WA 99114	684-8887
Vice-President:	Bob Bristow	PO Box 1165; 2567 Mudd Lake Rd. Chewelah WA 99109	935-4375
Secretary:	Ginger Pitman	701 B Williams Lake Rd, Colville, WA 99114	684-8887
Treasurer:	Sylvia Allen	2633 Highline Rd, Chewelah, WA 99109	935-8779
Trustee 1:	Scott Jackson	1028 Old Hwy 12 Mile Rd, Colville, WA 99114	684-6371
Trustee 2:	Bruce Hurley	10617 W. Lakeside Lane, Nine Mile Falls, WA 99026	509-413-2768
Trustee 3:	Daniel Lundy	1035 Haller Creek Rd. Addy, WA	685-5870
Committee Chairs			
Program Coordinator:	Bev Bockman	1750 N Havichur Loop, Post Falls, ID 83854	208-773-5384
Hospitality:	Dianne Lenz	556 Douglas Falls Rd, Colville, WA 99114	509-684-4925
Field Trips:	Fox, Jackson, Ingram	PO Box 595, Marcus WA, 99151	684-2136
Librarian:	Ruth Ross	750 N Lincoln, # 6, Colville, WA 99114	684-4925
Historian:	Carol Price	PO Box 77, Laurier, WA 99146	684-2857
Newsletter:	Joseph Barreca	2109 Hwy 25 South, Kettle Falls, WA 99141	738-6155
Show Chair	Bill Allen	2633 Highline Rd, Chewelah, WA 99109	935-8779, 936-2446