

Place: Arden  
Community Club  
Hall Rd  
Arden, WA



Time: 7:00 PM  
Third Tuesday  
Each Month  
(Jan.-Dec.)

## The Panorama Prospector

### June 2011

#### Panorama Gem and Mineral Club Meeting Minutes

*By Ginger Pitman*

There was one visitor and 43 members to welcome him at our meeting. Bob talked about assays and there is an ad in the Huckleberry Press for a lab that does fire assays for gold and silver.

Reba talked about the forest service having a "stream table" that may work as a hands on educational display at our show. Johnie will check it out.

The lost/found bag from the show will be used in pieces in the silent auction for scholarship funding.

Sylvia gave the treasure's report; the scholarships are funded. Ya!

The rent is paid for another year at this great meeting place; they said we have cleaned well, but remember not to drive on the grass.

Sylvia is looking into a field trip opportunity, Double Eagle Mining. We hope the details can be worked out. Right now the roads/digs are very wet.

The club voted to buy the 10 older display cases from the Spokane Rockrollers; there are 5 more available that we will look into.

Our prayers/well wishes go out to Scot Jackson because of the passing of his father.

Steve Fox will award our scholarship to Justine Moss at Kettle Falls, Mike Latapie will do so at Colville for Andrew Christian. Luci will present at Chewelah to Kayla Kofmehl.

Steve gave a report on the field trip to the calcite quarry near Marcus. The next trip is the Tri-Federation in OR.

The Release and Hold Harmless Agreements will be used for our field trips. Please sign one for the year.

*Continued on Page 3*

#### NW Federation Rockhound Rendezvous

*By Bill and Ann Sebright*



*(Editor's note: This article is pieced together from an email by Bill and Ann Sebright and the article in the NW Federation Newsletter. Any inaccuracies are probably from the editor not the contributors.)*

Hardy rockhounds converging around a campfire was central to the rendezvous experience this year. Starting out on a field trip when the ground has an inch of snow on it in hopes of a quick melt and good luck shows the true pluck of a dedicated bunch of rockhounds. The Panorama Gem and Mineral Club was represented by members Bill and Ann Sebright and Jerry and Vanita Novak, some of our pluckiest. As an editor it is not my role to question the sanity of this undertaking but I did wonder just where this all took place. It took some virtual driving and Google Maps to figure it out but the following maps will tell part of the story. We'll let the Sebrights tell the other part:

"With map(s) and the Federation newsletter in hand and directions from the motel staff, we started out for the Camp Creek Rendezvous, 60 miles of beautiful rock outcroppings and high-water rivers and streams.

The final few miles of road was graveled and forced us to drive slower passing a Bentonite plant with the surrounding mountains layered in greens and tans. We broke over the final hill and before us appeared a small city (we're from Clayton remember) of campers, tents and trailers.

We're sitting at about 4,500 feet, and it's snowing. Checking in at the campfire, we find out that we're waiting an hour or so for the weather to clear (again, grateful for audio books.) Hampton Butte has 5 inches of new snow and the concern is for tearing up the B.L.M. road. Scouts are going out to check on other sites. Jerry Novak spotted Bill at the campfire by his Panorama cap. The bitter cold and uneven ground has Vanita cozy in their trailer.



So here they are south of Prineville Oregon, way north of decent weather, camping in the snow. Just in case you don't believe the snow



part, this pretty much cinches it. "Bill and I choose the Wagner Canyon site for surface only picking. There was still an inch of snow covering the ground, and the best picking is about a mile in. We started our hike in; and with the snow melt comes the mud. It's gooey and accumulates on your footwear. We shared the Canyon with free range cattle including a bull serenading a

bevy of bovine beauties AND a fellow rockhound who has mastered the moo.

Petrified wood was the rock du jour, and small pieces were plentiful. Agates, chert and jasper were also hiding in the sage and juniper.

Our second day of gathering was right off Camp Creek Road with the encampment visible from the higher hills. Snow spit a bit and a glacial wind kept us bundled up and red-cheeked while collecting petrified wood, agate and jasper. The weather must have cleared some by Monday the 30<sup>th</sup> because they went 70 miles to Glass Butte and it rises from 5000 to over 6000 feet.



But sure enough, here is Bill leaning on a volcanic outcrop at Glass Butte in the sunshine. Here's the report: "Rock climbers were out in droves, and we enjoyed watching them from terra firma. We were amazed at the Golden Eagles' 12 foot nests." No word on how good the rock picking was, but they did pass on a few things they learned:



"Things we learned on our first biggie dig: rubber boots are good to have along; a printed card to exchange with friendly like-minded people is a handy thing; don't wear your Panorama Gem and Mineral Club name tag because people think you know stuff, but DO wear your Panorama cap."



*Minutes continued from page 1*

Rex and Mable are doing OK but would like emails/calls and a short visit on your latest adventures or rock inquiries.

We were able to secure Mike Frumen for our June program, he will be covering opals and anything you want to know about them. He has seen Mike's opal.

Our program turned out to be a show and tell. Johnnie, Brian, Steve, Bev, Bob, Jim and Johnnie again rounded out the night. We will do this for everyone again at the July meeting.

*End*

### **Johnnie's Jabber**

(Notes from our esteemed president)

Ginger and I just got back from the North Idaho Club's rock show which was very nice and well attended. Other club members that were involved were Mike and Dianne Rose, Bev and Bob Bockman. Brian Martell was also there as a dealer. I think that was the last rock show in eastern Washington or north Idaho until next year. Ginger and I will not be at the next two meetings so come and see how a real meeting should be done. Thanks Bob Bristow for filling in, you always do a great job. The program for the June meeting will be on "OPAL" and will be presented by Mike Furman who has worked with opal for many years. It will be a very interesting program. The program for July then will be another "SHOW & TELL", so be sure to bring something to show that is meaningful to you, we have been known to allow a slight stretch of some of the finer details. It should be rock related if possible. The meeting for August is our annual picnic; we will work on the details for that at the July meeting.

We have scheduled a field trip to Emerald Creek for garnets on June 24th which is a Friday and a travel day and digging on Saturday the 25th. The Spokane Rockrollers have invited us to go to the Thulite dig over at Riverside, WA, which is near Omak, on the 25th. At the Riverside location there is also Serpentine and Zebra Rock, these are \$0.50 per pound, and the Thulite is \$1.00 per pound. So you have a choice. If you decide to go to the Thulite dig, they will meet you at the General Store in Riverside at 11:00 - 11:30 on the

25th of June. Mike Shaw is the field trip leader for this field trip. Check the web site for other field trip information.

*Johnnie*

### **Club Members in the Community**

Several Club Members have been out and



about in the community. Some presented awards to graduating students. Here is Luci Bristow presenting the Panorama Gem and Mineral Club scholarship of \$500 to Kayla Kofmehl in at the Chewelah High School graduation ceremony. Steve Fox awarded our scholarship to Justine Moss at Kettle Falls, Mike Latapie presented a scholarship at Colville for Andrew Christian.

Monday June 6<sup>th</sup> was a geology field trip



day for the Colville 7<sup>th</sup> grade classes. Club members Joe Barreca (above) and Steve Fox participated by explaining local geology to 4 groups of students who arrived by bus every hour. This picture was taken early on in my talk while they were still paying attention.

## BLM Looking for Input

The Bureau of Land Management (BLM) Spokane District would like to invite you to participate in one or more of our eight upcoming public workshops listed below. The purpose of the workshops will be to solicit your suggestions regarding alternatives for the Eastern Washington and San Juan Resource Management Plan (RMP).

A newsletter and other information about the workshops and project is available on our project website at <http://www.blm.gov/or/districts/spokane/plans/ewsjrmp/index.php>.

Yakima - July 25, 2011 (6-9pm) at the Oxford Suites, 1701 E. Yakima Ave

Okanogan - July 27, 2011 (6-9pm) at the County Fairgrounds Agriplex Annex, 175 Rodeo Tr

Wenatchee - July 28, 2011 (6-9pm) at the Chelan PUD, 327 N. Wenatchee Ave

Friday Harbor - July 30, 2011 (1-4pm) at the Mullis Senior Center, 589 Nash St

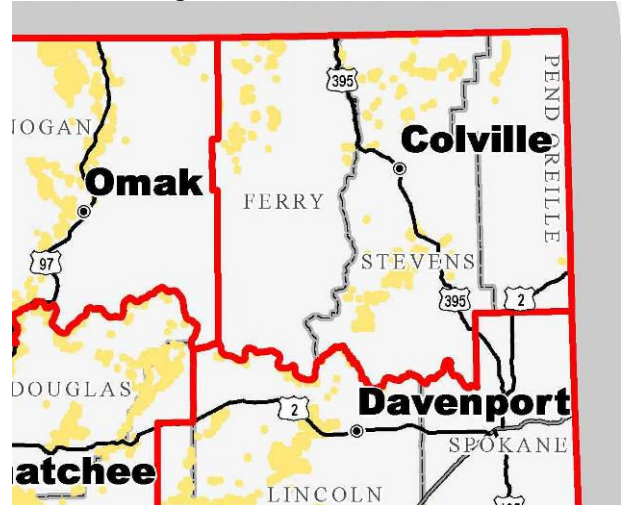
Goldendale - August 1, 2011 (6-9pm) at the Klickitat PUD, 1313 S. Columbus Ave

Pasco - August 2, 2011 (6-9pm) at the TRAC Center, 6600 Burden Blvd, Rm 4

Davenport - August 3, 2011 (6-9pm) at the Davenport Memorial Hall, 511 Park St

Colville - August 4, 2011 (6-9pm) at the Institute for Extended Learning, 985 S Elm St, Rm 149

following: "Ferry, Stevens, Pend Oreille Huckleberry Mtns, Pend Oreille River, Vulcan Mtn, PNW Trail, Lambert Creek Travel Management/Access, Recreation, Forestry/Fuels, Land Acquisition/Retention." We can assume that part of the "recreation" in question will be rockhounding.



Areas in orange are BLM land.

Reading through the scoping report, the largest number of comments by far concerned recreation. The issues that the BLM is concerned with seem to center around preservation of the ecology and habitat. There were six comments on minerals. I didn't see a document recording the comments, so I don't know what is being said. Still August 4<sup>th</sup> is a Thursday night. It would be a good idea for some members of the club to be there and see what is going on.

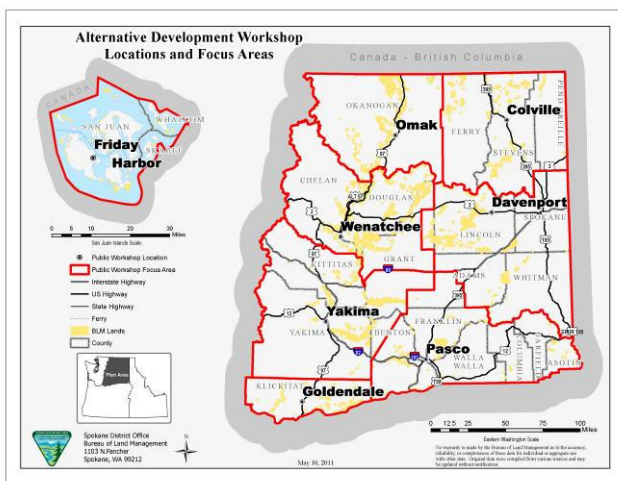
## Rock Collection for Sale

*(Letter passed on to the club by Johnie Pitman.)*

Greetings Johnie,

My wife and I have been rock hounds most of our lives. We were members of the Ark-La-Tex Gem and Mineral Club for many years. Unfortunately, age has caught up with us. We have been retired for several years (I am now 72); and have found it financially necessary to sell most of our gem and mineral collection.

You can find my inventory on "[www.amazon.com/shops/samuel270](http://www.amazon.com/shops/samuel270)". You can then use the search bar at the top to locate items of interest. Some of the categories include: Quartz Crystals and Clusters, Solution Quartz,



This is the area for BLM land where the uses are being reviewed. BLM land typically covers areas of old mines or that are heavily mineralized, just the kinds of places that rockhounds like to check out. Locally, their topics of concern include the



Assortment of, Colorado, Double and Multiple Terminated, Shard, Golden Healer, Elestial, Cactus Quartz, Spirit Quartz, Rose Quartz, Cherry Quartz, Green Quartz, Mounted, Herkimer, Faceted, Re-faceted, Rainbow, Cactus, Tabby, Smokey Quartz, Rainbow(s), Phantom, Needle, Colorado, Aqua Aura, Laser, Pendant, Citrine, Calcite, Amethyst, Cookeite, various fossils or just enter Fossil (Ammonite, Trilobite, Orthoceras, fish, seaweed, etc.), Tumbled, Sphere, Spheres, Ironwood, Geode, Petrified, Petrified Palm, Opal, Opalite, Jade, Jadeite, Sodalite, Apophyllite, Stilbite, Corundum, Celestite, Selenite, Silicon, Sand Dollars, Display Stands, Chalcedony, Jasper, Chalcopryite, Pyrite, Fluorite, Agate, Rhodonite, Obsidian, Ore, Coral, Black Apache Tears, Thunderegg, Coprolite, Goldstone, Obsidian, Marble, Hematite, Lapis, Azurite, Shiva Lingam, Meteorite, Copper, Bonsai, Wand, Sharks Teeth, Amber, Ironwood, Selenite, Obsidian, Glass, Onyx, Septarian, Pet Stones, Hummingbird, Magnet, and Flowers. I am adding new items each week.

Your members will find a treasure trove of materials. If there is something a member desires that I have not yet listed on Amazon, just let me know and I will check to see if I still have it in stock. I would greatly appreciate your passing this information along to your members.

Thanks again for your assistance. Have a nice day.

Samuel E. West



Here is a jade puzzle from the collection, \$74.95. At over 3000 cataloged, photographed and priced items, this is not your average out-in-the-garage

make-me-an-offer-on-the-whole-thing sort of sale. The prices are steep by local standards. But West has a great satisfaction ranking on Amazon. It is an amazing collection to poke around in. For instance I've never heard of a "Rainbow Calcite Aqua Aura Geode" but this is what they look like:

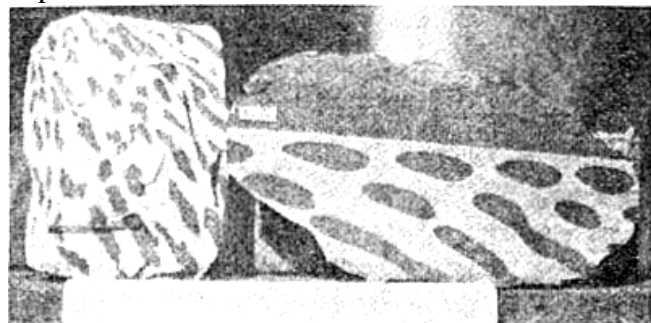


The collection also has a lot of record albums, books and other odds and ends.

### Zebra Rock



I thought since there is also Zebra Rock at the Okanogan site with the Thulite, I would dig up a picture from the Internet. The name comes from deposits in Australia that have hematite and



chlorite coloring. I can't guarantee the Okanogan variety is as strange as the Australian so I hope someone brings back some for us to check out.