

Place: **Arden**
Community Club
Hall Rd
Arden, WA



Time: 7:00 PM
Third Tuesday
Each Month
(Jan.-Dec.)

The Panorama Prospector

January 2011

Panorama Gem and Mineral Club

Minutes for November, 2010

By *Ginger Pitman*

We would like to thank some members of the Rock Rollers for joining us, along with 4 visitors and 60 members. What a crowd.

As the new membership list is finished and sent to the federation in Jan every family should be getting the Northwest Newsletter. Remember dues are now due.

Steve Fox gave a report on the shop, the hours and the money which will be used for repairs. Our Christmas Party will be on the regular meeting night, set up and decorations will be starting about 5 and we will eat about 6 PM. It is Potluck! If you want to do the gift exchange the gifts should be marked for male, female, kids, anyone: not more than \$10.

It was officer election night and the results are:

President: Johnie Pitman

Vice President: Bob Bristow

Sectary: Ginger Pitman

Treasure: Bill and Sylvia Allen

Field trip Leader: Steve Fox, Scott Jackson, Harold Ingram

Hospitality: Diane Lentz

Trustee: Scott Jackson

Bill Allen gave our show report; the dealer letters have been sent. The Rock Rollers Club will again let us borrow their cases, Thank you.

Our night continued with our annual scholarship auction. Bill did the auctioning and kept things going. Who would have thought we would have so much fun and get rid of all those rocks!! Congratulations to all who took part and the wonderful giving. I hope the rocks you bought are right for you. Pat yourselves on the back because Sylvia said the auction including the rocks and the 16" saw that Rex donated netted about \$1330, WOW!!!

End



The Big Rock Auction

By *Joe Barreca*

There were buckets of rocks, boxes of rocks, bags of rocks, agates, garnets, tiger's eye, amethyst... You name it and we had it at the Panorama Gem and Mineral Club's annual auction in November. Above, auctioneer Bill Allen, and trusty assistant Daniel Lundy keep the action going. (Picture thanks to Bill Sebright.) The Arden community Center was packed. People came from Spokane, Pend Oreille County and Idaho. Well alright, Bev and Bill Bockman come from Idaho all the time – but you get the idea. And don't forget the big rock saw that Rex Barrans donated that was on a trailer outside. I think that went for \$300. The club took in \$1330 but the big winners were the buyers. Members took home rocks worth a lot more than that.

Johnie put a good system in place. He gave everyone a card with a number on it. Ginger Pitman and Sylvia Allen kept track of who had what number and what purchases they made. When it was all over, people just went up and squared up their account. It was also a handy time to pay your annual dues. (If you still have not done that you should mail in the \$15/family or bring it to the next meeting. Otherwise you won't be receiving this fabulous newsletter.)

The Big Christmas Potluck

By Joe Barreca



Luci Bristow leads the choir in carols.

The Arden Community Center was filled with club members December 21st despite the Christmas Mail snafu that delayed postcards announcing the event. We probably had enough food to feed everyone once over. Who knew? Rockhounds are also chowhounds.



We also had a big supply of great gifts for all ages. At a brief meeting perennial president, Johnie Pitman, told us about the success of the rock auction. After we took a couple of rounds through the kitchen, we were all ready to pick a gift. Well it wasn't exactly that simple. To eliminate numbers with no names staying in the basket, we had a careful count of all the attendees and used only that many tickets. This worked really well. Despite the advice that gift values be limited to \$10, many were worth far more than

Panorama Gem and Mineral Club News January 2011- 2 -

that. I got a paperback copy of The Complete Guide to Rocks and Minerals by John Farndon. In hardback it costs \$190. Actually, Amazon has it for \$10 in paperback. Still with over 800 color pictures and illustrations, it is a treasure trove of information, some of which may end up in this newsletter. Thanks whoever you are!



[Brian Martell is left holding the bag.]

With all the food and presents, there was a lot of cleanup to do. Everyone chipped in and we had musical accompaniment by our ad hoc choir. The new meeting hall really proved its worth for this event: full kitchen, lots of easy-to-clean tables, a piano and we didn't need to make any special arrangements. With its central location and complete accommodations, the Arden Community Center has increased membership by 50% already. It was one of the best club decisions of the year.

The Big Newsletter Resource

By Joe Barreca

Okay, I promise to stop using "big" in the title from now on. But this is big. The two DVD disks from the Scribe rock club newsletter group have thousands of newsletters in Adobe PDF format on them. You can search them for any topic, for instance "Precious Opal" got 71 hits out of only a fraction of the files on the first disk. I estimate there are 8000+ files on the first disk and maybe as many on the second.

If you want to search for anything related to rocks, gems and minerals, there is more information here than any one person can handle. My proposal is to give copies of these disks to anyone in the club who wants them. You can search for information on any rock topic you are interested in. All I would ask in return are some leads on good articles, we might like to include in this newsletter.

The President's State of the Club Message:

By Johnie Pitman



2010 is gone and as we look back it was a very good year from start to finish. The most important accomplishment was relocating to The Arden Community Center, which is such a nice place to hold our meetings.

We will need to go over the house rules again to be certain that we do our part in keeping the building and grounds clean and enjoyable for everyone. The shop is doing well thanks to Scott Jackson, Steve Fox and Brian Martell. It is located at Scott's place at 1028 Old Hwy 12 Mile Road, Colville, WA. (684-6371)

The annual show was also a big success thanks to Bill Allen and to all who helped make it happen. There were many field trips that were well attended with members and non members finding some very nice specimens. Thanks to Rex for again leading many of those and to all who stepped up to lead when Rex couldn't.

Due to many money raising activities we were able to again provide one \$500 scholarship each to Kettle Falls, Chewelah, and Colville High Schools. Thanks to all for helping in this project to help youth with their college expenses.

The annual picnic and Christmas party were a lot of fun and the food and fellowship was fantastic.

The annual rock auction was a huge success largely because of donations by Chuck Prentice and Sherry Johnson, and of course because of all of your generous participation in

the auction.

With all of the successes of 2010 behind us we are looking forward to another great year in 2011. I trust that you had a very cheerful and healthy Holiday Season.

It is again time to turn our attention to our up coming show. The show planning meetings will be at 6:00pm before each of our regular meetings from now until the show is over, so come early if you want to be involved with the planning process.

The program for the Jan. meeting will be a film on Franklin New Jersey's fluorescent minerals, come and check them out.

Minutes for December 21, 2010 Meeting

By Johnie Pitman

The club's annual Christmas party was well attended; the gift exchange #s went to 46. The gifts were exciting and the food was delicious, plenty for all, with good fellowship.

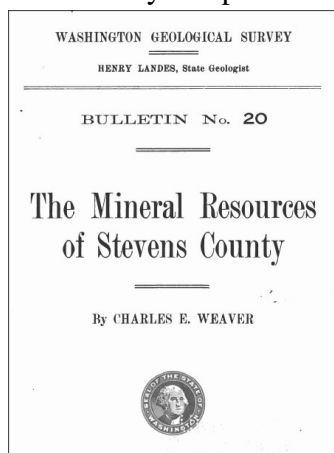
Becky Dobbs will bring juice; Kay Lupton will do cookies for next meeting.

The treasures report was given, with about \$1300 raised for the scholarship fund during the November rock auction, everyone did great. Sherry is still doing her ebay magic for the club with the donation from Chuck/Donna Prentice, thank you to them.

Geological Survey Books

By Joe Barreca

In years past the club has scanned several



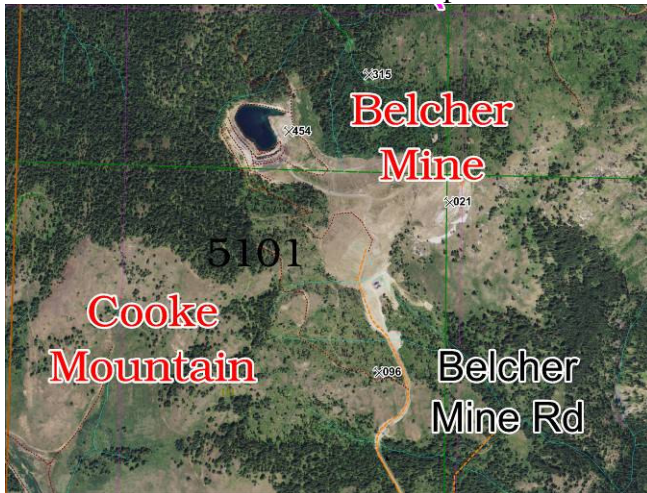
of these books from the State and Federal Geologic Surveys in the early 1900s and put them on disks to read. Since then Google Books has scanned several more and built Adobe pdf files from them. You can download them from Google Books but they are still not

searchable. With some more effort they can be made searchable. They provide great background material on old mines and local history. If you are interested in them, contact me and let's talk, (509) 738-6155.

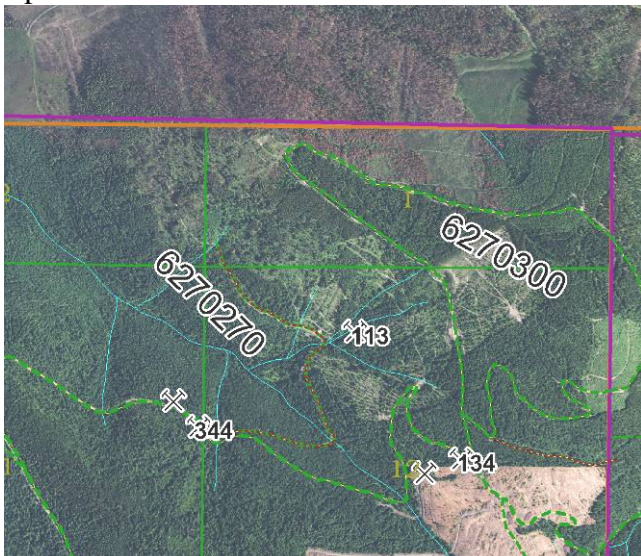
Mine Quest 2011

By Joseph Barreca

In December 2010 I revised the Geologic Atlas of Stevens County for the third time. As a rock hound, I can't help but wonder what is out there and over the years have created a kind of "bucket list" of mining areas that I would like to visit. Recently the club has been wondering what new areas to look into for field trips. Many of these suggestions don't fit the usual club profile of some place you can just drive up to. Still I thought it might be worth while to lay these out here and see if we can do some exploration.



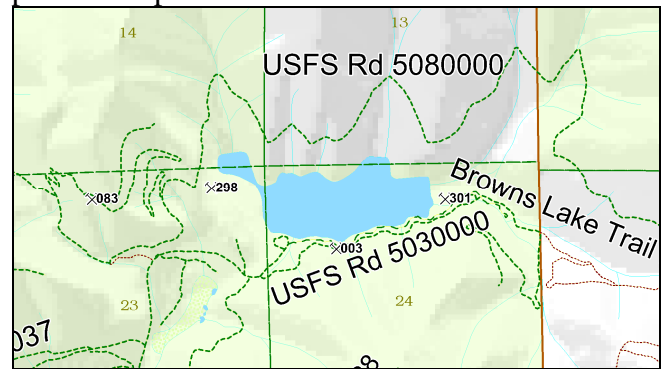
The Belcher: Belcher City was once the most thriving mining area in Ferry County. Mines in this area held copper and gold. The Belcher itself was said to hold the largest solid body of iron ore in the state. The water left in the main pit is deep blue from copper stain. Minerals include Magnetite, Garnet, Chalcopryrite, Tremolite and Epidote. Ghost town + old mine = take a look.



The Big Strike: Off Frisco Standard road near the Canadian border, the Big Strike is one of

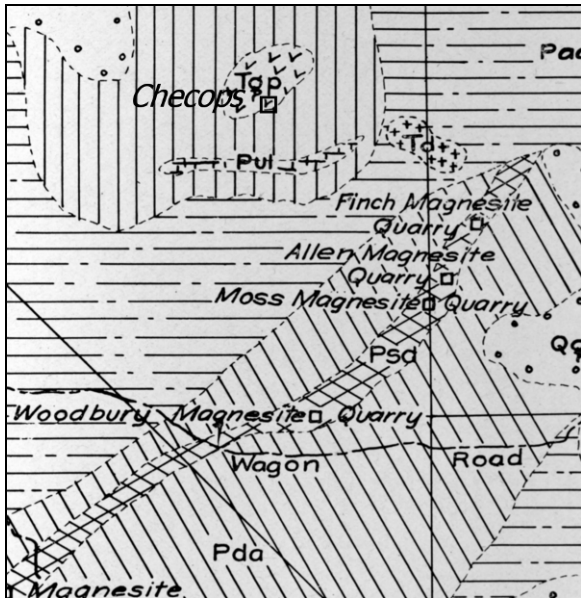
several in the area with gold, silver, lead and zinc. What piqued my curiosity was a fire nearby a few years back. The Big Strike is #113. You can see the blackened area mostly north of the border. I was thinking fire and erosion may have increased the value of gold panning up there. Since the fire was downstream that is not likely but the big clear cut to the south at the top of the drainage may have had a similar effect.

Blue Grouse Mt is just north of Garden Spot Road, the back way from Loon Lake to Newport. Weaver writes in The Mineral Resources of Stevens County "In places on the northeast side of Big Blue Grouse Mountain, large areas of the granite are entirely composed of quartz and bluish-pink mica...The ore deposits consist of well-defined quartz veins containing crystals of the tungsten mineral Hübnerite, the Bismuth mineral Cosalite, Pyrite and its alteration products, Hematite and Limonite, in the form of psuedomorphs."

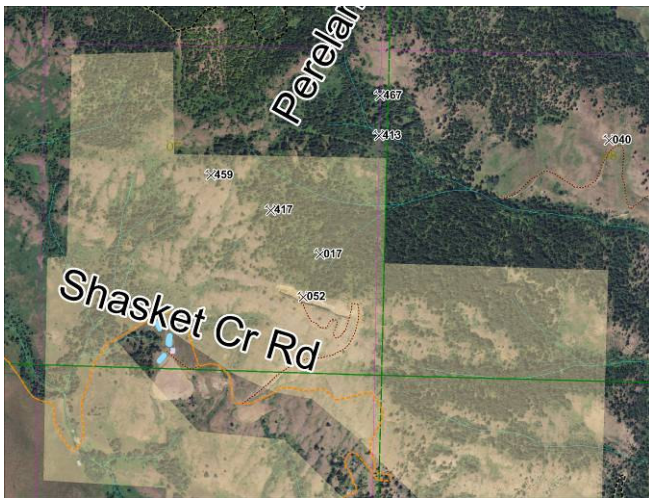


Browns Lake in Eastern Pend Oreille County, like all those listed so far, is on a road. The nearby mines yielded copper and gold, but also Uranite, Chalocopyrite, Smokey Quartz and Bornite. It is all on Forest Service property. Like almost all of these suggestions, there are several mines in the area with interesting minerals.

Toulou Mountain: This is an area between Pierre Lake and the Kettle River. There are over 10 mines nearby including the Scotia, The Globe, Toulou Mountain, Copper Butte and the Iron King. All are copper and gold mines, many with extensive work done. Many contain pyrite, chalcopryrite and bornite. They yielded good amounts of gold in their day and could offer good opportunities for gold panning and metal detecting. They are on BLM land and there appears to be road access.



Checops Mine: Okay, this one is off the road, but less than a mile. It is by a little lake in solid rock. There are several other mines nearby, mostly copper with some gold. It lies at the north end of a long seam of Deer Trail Argilite and Stensgar Dolomite that runs from the Finch Quarry to the Deer Trail, some of the most productive mineral finds in Stevens County.



The Comstock Mine in Ferry County is east of Danville on BLM land. In the group, there are seven mines with copper, gold and silver. They also have Bornite, Hematite and Covellite, a massive blue copper sulfate. It was claimed after a heated horse race from Marcus ended in a tie on the first day the north half of Ferry County was opened for mineral exploration. The Peacock Bornite attracted Whites and Indians alike.

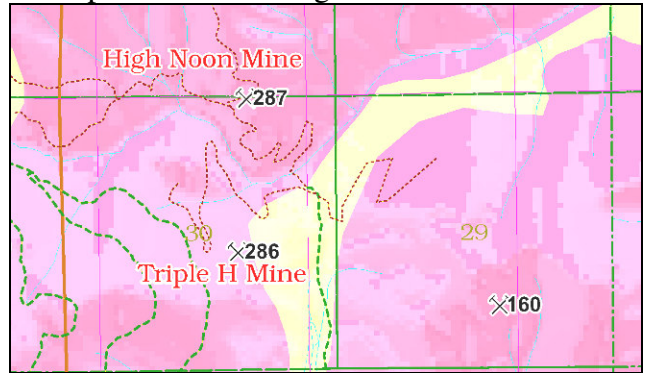
The Reed Iron: I stumbled across information on this mine while looking for the mineral Spinel, a very hard crystal of 7 1/2 to 8 hardness, various

colors including red, black, blue and green. The



Spinel

mine is located south of the Springdale-Hunters road. The main minerals in the area include chromium, Diopside, Epidote and Fluorite. As we know from exploring nearby Adams Mt, most roads are blocked in this area, but at least on the aerial photo some run right to the mine.



Timber Mountain: I have become a little obsessed with this mine. The pink in this picture indicates pegmatite, a slow-cooled granite that extruded many minerals. There are big chunks of mica in it. The other two mines here (#286 & #287) are uranium mines. But Timber Mt is a "Gemstones" mine. They include: Epidote, Titanite, Chondrodite, and Grossular, a kind of garnet which may have given the name "Ruby



Creek" to that watershed. It is hard to get to. I have failed twice. Next time: camp overnight, take a machete and flagging, a GPS and maps.

There are more on my list but enough for now!