

Place: **Arden**
Community Club
Hall Rd
Arden, WA



Time: 7:00 PM
Third Tuesday
Each Month
(Jan.-Nov.)

The Panorama Prospector

June 2010

Panorama Gem and Mineral Club

Minutes for May 18, 2010

By Luci Bristow

In President Johnie's absence, Vice President Bob Bristow opened the meeting. Sylvia Allen gave the Treasurer's report. Bill Allen and Harold Ingram will provide goodies for the next meeting.

Bob asked for a report on the Field Trips and Steve Fox gave the following accounts:

May 2 – Phillips Ranch – Approximately 11 people in attendance. Found: Selenite, Chalcopyrite, Bornite, Zinc, Galena

May 9 – Adams Mountain - Approximately 11 people in attendance. Found: Epidote, Spessertine Garnet, Quartz.

May 16 – Saddle Mountain – Approximately 50 people in attendance. Found: Petrified Wood, Bog Opal

May 23 – Old Dominion Mine is on the list for exploring. Members are expecting to find some Azurite.

June 4 – 6 – North Idaho Gem Show

June 13 – Crystal Prospect

June 20 – Daybreak Mine

July 1 through August 31 is Panning Season.

Our club scholarships were discussed. Again, Steve Fox reported on the results. The scholarships were won by the following people;

- Kettle Falls – Tanner Bolt - Certificate to be presented by Steve Fox.
- Colville – Madeline Michaelson – Certificate to be presented by Diane Lentz.
- Chewelah – Shalene Beck – Certificate to be presented by Luci Bristow.

These scholarships will be presented at the named schools Awards Night.

Continued on Page 2

Mad About Mattawa

Pictures by Rex Barrans

Story by Joe Barreca



[Greg Van brings home the petrified wood]

On May 2nd, while 57,000 people were running around Spokane for Bloomsday, a select few rockhounds were driving from Chewelah, stopping in Spokane to pick up more folks, and arriving at a remote hilltop near Mattawa, Washington to hunt for petrified wood. They weren't select for long. Another group showed up from the west side and soon they had 23 cars and over 100 rock hounds. It's surprising this site continues to yield good petrified wood with all the pressure on it.



[Here are some of the cars at the site.]

It helps to have some experienced people along. Greg Van let our group to the prime spot. He came back with 100 lbs of rock. It also helps

Steve Fox also reported on the Club's Shop. The Club now has saws in 6 inch, 8 inch, 12 inch, 16 inch and 18 inch. Please remember the Shop costs \$2.00 an hour. The Shop is now located at Scot Jackson's home.

Bill Allen presented a proposal on moving the club meeting place to a larger facility. Our club has outgrown the Union Hall. A committee of Johnie and Ginger Pitman, Bill Allen and Rita Cordrey met and looked at several options. They found that most places wanted a payment for each meeting, some as high as \$50.00 a meeting. Rita suggested that we look at the Arden Community Hall in Arden. The facility proved to be a good one, with decent clean restrooms, good parking, good power outlets, also has a fire pit for picnics, cost of \$30.00 a meeting, and the location being fairly central for our club members. Arden is approximately 15 miles from Kettle Falls and 15 miles from Chewelah. Our club is divided fairly evenly into 3rds. A discussion followed. Bill Allen moved that we move our Club meetings to the Arden Community Hall. Luci Bristow seconded the motion. The motion won by a majority vote. **Our next meeting on June 15 will be at the Arden Community Hall.**

Bill Allen also presented a motion that we pay the \$30.00/mo. in one lump sum for the year. This would secure our use of the Hall for the meetings every month. No one could bounce us for other purposes. The motion was to take \$360.00 out of the General Fund. Discussion followed. A contribution jar was suggested to help defray the cost and to get money back into our General Fund. Bill called for a vote, seconded by Steve Fox and the motion passed.

Thank you Committee members for the time spent in getting this needed task done.

Vice President Bob read a letter from the BLM stating they were starting to have meetings for discussion of Land Use. The club was encouraged to write their congressperson to keep our rock hunting areas open. Their addresses can be found in the front of the telephone directory.

Following the break, Bob and Luci Bristow, Tom and Pat Scales, showed a video of their rock hunting trip to El Paso and other points of interest along the way. Thanks for an interesting video!

Meeting adjourned at 9:00 PM.

(Mad About Matawa continued from page 1)
to have some good backup. Jerry Novak drove down with his pickup that the group used to carry tools and bring back rock. It really is not safe to carry long handled shovels and picks in the passenger compartment of a car. In fact Rex Barrans reports that it is illegal. Jerry made good use of the truck himself. He reportedly brought back 500 lbs of rock. In fact just about everyone seems to have done well on this trip. If you are going to spend over 14 hours on rockhounding trip, you had better do well.



[Jerry Novak near his pickup, power line view]

One of the keys to the right area is a low tension powerline going to a radio tower at the top of the hill. The most productive pit was under this power line.



[Here are some folks in that pit.]

Another hint on how to make the most of a major trip like this is to bring along some good food. That was the idea behind this effort:



[Quite possibly Pat and Gail Johannes tailgating.]

Here are some pictures of the petrified wood that Jerry Novak brought back:



[Regular wood and a limb-cast]



[Chip showing color – some also fluoresce]

Phillip's Ranch Prospect

By Stephen Fox

Sunday May 2nd started off as a beautiful sunny morning and would stay that way all day. Only a few white, fluffy clouds would float through, but would bother no one. With such a nice day ahead eleven of us met at the parking lot of Harvest Foods in Kettle Falls. Rex Barrens would be our leader today and explained what minerals we could possibly find where we were going. As we were headed out I stopped to fill up with gas and so was going to be a little late.



[View from the Phillips Ranch Prospect]

The drive up highway 25 from Kettle to Northport is one of the most beautiful drives in the country, following Lake Roosevelt all the way with some really excellent views. Therefore I set my speedometer at 50 and was able to avoid a rather large muley doe who seemed in no hurry to cross the road. The person in the Chevy Malibu who had been riding my tail decided that following me might be safer than trying to dodge deer by himself. He tailed me the next eight miles to Northport. Out of Northport you take the Sheep Creek turnoff but continue with a hard left onto the asphalt highway, go about another two and half miles and take the wrong right up to a hunting camp. This will put you on a dirt track that will bring you right into the old quarry where everyone else is who came up the right road. Coming in I noticed some outcroppings that may prove interesting on our next outing.

As I parked I noticed that everyone was pretty well scattered out and very busy. There are quite a few minerals to find here. The most predominate mineral is chalcopyrite, with some zinc, iron pyrite, bornite (peacock ore), malachite,

azurite, Selenite (gypsum), and galena. Most folks were busy getting some very excellent chalcopyrite crystals with some bornite (a copper precipitate) mixed in.



[This picture is from 2008 – same idea though]

Rex seemed to be waiting for me and asked if I had my sledge with me. I was ready to get to work with it because I had my new handle on it and wanted to break it in. Rex had a boulder he wanted some specimens out of and was sure that it would break up easily. Suurrrre. We went over to it and were followed by a curious Yank. There are now three of us about to inflict a serious break up of this big rock. I climbed up on top and started to swing my sledge. The first hit bounced off harmlessly, as did the second, third, and then movement. I created a small crack and we got our first chunk with some very nice chalcopyrite in it. I kept swinging until the head of my rock hammer came off. At this point I was not happy as I had made a couple of more cracks, a lot of flying chips, but not much in the way of reducing Rex's boulder. Also the wedge keeping the head on had gone flying to who knew where (found it later). It was at this point that Yank lost faith in my rock hammer and went to work on 'the rock' with his tools, with a small amount of success.

Rex had gone back to his car and came back with some wedges and a four (?) pound hammer. He found a promising crack and went to work on it. He wasn't getting very far so Yank took over and pounded away. I saw where the crack was

splitting this chunk and tried to improve it with a few good whacks (yes I had fixed my sledge). This seemed to work as shortly Yank had another chunk of rock with nice color to it (even though it was slightly beat up). After beating on 'the rock' there were a few cracks, a lot rock dust, and three defeated rock hounds. Brian Martell came over and was able to wedge a couple of nice chunks using Rex's wedges on the cracks we made.



[This Selenite picture is from Wikipedia, but is like the crystals at Phillips Ranch Prospect.]

About this time I decided to go look for some Selenite. There is Selenite all over, but you really have to know what your looking for. The easiest place is a clay seam in the middle part of

the quarry. There I ran into Jerry and Pat and we decided to really work this clay over. We actually weren't having much luck finding any decent sized crystals. I figured for me it was because I had found a lot during our previous two trips, so was not due. As we were heading out, Pat looked down and found the nicest set of Selenite crystals. This grouping was at least four inches across with crystals up to one inch high. Later, Gregg found a mass of Selenite about one inch high also. Two really great finds.

For me it was time to go. It was a great day for getting out and enjoying ourselves.

Upcoming Field Trips

June 13—Crystal prospect , Allen Rd.— Smokey Quartz— Hard rock tools ,cars with good clearance— meet at Safeway parking in Chewelah at 9 am —get your permit in advance at Levi's mini-mart in Deer Park-(license number, signature, \$10 per car)

June 20 —Day break Mine —Autinite Hard rock tools —Cars with good clearance —meet at Levi's

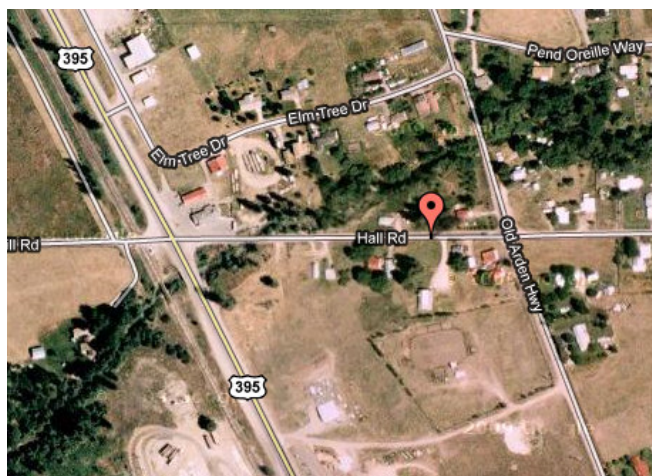
mini-mart in Deer Park at 9 am for permit (license number, signature, and \$10per car) –For south bound cars take first exit into town and Levi's is just past the park.

June 27 –Keystone and Edna mines –Serpentines, Pyrites, Copper minerals –hard rock tools –cars with good clearance — meet at Safeway parking in Chewelah at 9AM

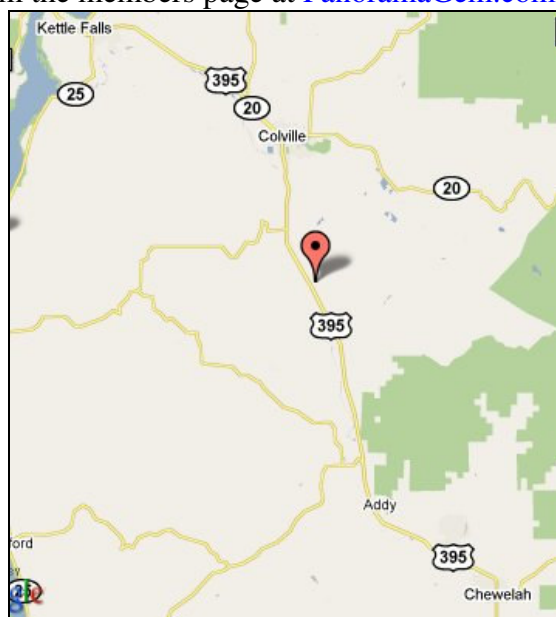
July 11 –Horseshoe MT.–Quartz Crystal– hard rock tools-Cars with good clearance –Meet at Harvest Foods in Kettle Falls at 8 AM

New Meeting Place

As mentioned in the minutes and as sent out in a letter from Bill Allen, the Panorama Gem and Mineral Club is now meeting at a new place, the Arden Community Club Hall. The Hall is just below the red marker in the map image below.



There is an interactive map to the hall from the members page at PanoramaGem.com.



[General Location between Colville & Addy]

Return to Adams Mt

Story and Pictures By Joe Barreca



[Nena Wright & Michael Clay get down & dirty]

Those of us who have been to Adams Mt several times know what amazingly clear quartz crystals can be found there. We found a few including some nice smokey samples on May 16th, but mostly we found a lot of work for little gain. For starters, we all got out shovels, picks and a polaski to do some road repair on the way up. For more whining about the road, check out the June 2009 newsletter, available on PanoramaGem.com.

My main objective was to clear a chute to remove overburden from the main vein into a wheelbarrow and dump it over the side instead of on the road. To do this right would have taken days, not hours. A risky tunnel left under several feet of overburden last year caved in this winter.

A cool addition was this washing setup that Larry Engle put together. This girl and her sister had a good time cleaning pieces of crystals.

Steve Fox went exploring and found some mines to check out, so we will all go back



again some day.