

Place: **Union Hall**
Meyers Street
Next to Campus Life
In Kettle Falls



Time: 7:00 PM
Third Tuesday
Each Month
(Jan.-Nov.)

The Panorama Prospector

August 2009

Panorama Gem and Mineral Club Minutes for July 27, 2009

By Ginger Pitman

It was hot but we had 41 members and Vanita introduced our 2 visitors. Sylvia had emailed the treasure's report, it was read.

Reba had given the club 3 full copies of the WA regulations for gold panning which were quickly claimed; others can be obtained at the Forest Service Office.

Joe explained there is a new area to look for crystals near Horse Shoe Mt, he agreed to lead the Sat. field trip.

Our first club picnic will be at the Chewelah park and will be our August meeting. We will set up around the east side of the park not the hwy side. Luci will get the buns and etc for the hamburgers, the rest of us will bring pot luck (can't go wrong). We will begin meeting at 5:30 and eat at 6 PM.

Bev had tickets for the Endowment Fund Raffle at the Federation Show coming up in Billings, MT and we sold our club's allotment. Good Luck

Mike L. gave us a report on the club's equipment.

We had asked for those who knew Joyce Dawson if they wanted join in a tribute to her. Several members brought rocks that reminded them of Joyce and we will put them in a mosaic for display at our next show. Joyce was on the club's first field trip, and remembered in the kindest way as our "bag lady". She will be fondly remembered.

After the break with plentiful snacks; the movie shown was about making synthetic gem stones. They are beautiful flawless stones, so buyer beware. You can also decide that you want the synthetic gems they are the same composition just priced less.

(End of minutes)

Horseshoe Mt The Koepke Site

By Stephen Fox



A beautiful Saturday morning in the parking lot of Harvest Foods in Kettle Falls greeted seven rockhounds. For a mid-July day, it was unseasonably cool, with storm clouds threatening and rain in the forecast. But we were not to be deterred. Joe Barreca was to be our leader this trip because we were going to meet two others who were taking us to a new area to dig crystals, and they are friends of his.

The trip over Sherman Pass was uneventful but was really beautiful. We stopped at a rest stop/viewpoint on the Republic side of the pass so Joe could call ahead and let his friends know we were on our way and about what time we would get there. As we got to the other side of Curlew Lake, we spotted a small rock store, and as I was looking to see if it was open, Harold yelled. I stomped on the brakes and narrowly missed having Jerry's truck for a hood ornament. There's a lot to be said for going slow and having formerly good brakes. They still stop my truck, so maybe they're still better than fair. The rock shop was open, but more about this store later.

With no more near-miss-incidents from dumb rubbernecking, we made it safely to our rendezvous and learned where we were going. We went up the usual road a few miles until we came to Forest Service Rd 2086 (the marker is not easy to see and you can easily pass it) and turned up it for 2.9 miles. We walked up an old logging road about 40 yards (maybe a little more). Later, Joe, Jerry and myself all went back for our vehicles, as four wheel drive can make it in there very easily.



[Steve Fox checking out the site]

This dig has quite a lot of good quartz specimens that are relatively easy to get and to recover. There is some hard rock digging so rock chisels and sledge hammers do come in handy. Most of the crystals that I saw were about a half inch long or smaller. They all seemed to be very clear with a good crystal habit. The overall quality was the best that I have seen from Horseshoe Mountain. Everybody was getting some excellent crystal clusters.

Some of us decided to do a little exploring and walked around. There are a few places where crystal-bearing formations are poking above ground and may provide some good specimens for future rockhounds. Right

now the main formation is bearing a lot of good quality material that is easier to get to.



[Sherry looking for those special clusters.]

After lunch I suggested that we go on up the mountain to get some purple fluorite at an old leach pond. Unfortunately the fluorite is very small and you need a good hand lens or microscope to see the crystals. So I consider it a bust. We did look it over pretty well though until folks decided to go on up to another quartz dig that is supposed to be pretty good, or back to the first one, or home. Sherry directed me to a place that she had been to and we discovered that someone had really worked the site over. To the point that a small mine had been dug out. There were no signs of any crystals whatsoever. So Sherry and I went looking for Joe whose car was up there also.

We found Joe, but more importantly, we found HUCKLEBERRIES! ☺. As I ate my way back to the truck, I found Sherry and Harold patiently waiting for me. Reluctantly I got back into the truck and we headed out. Just before we made it out to the main road, we found our way blocked by Joe's car. He was busy picking as many huckleberries as he could before I hit the patch. Sherry and I bailed out and we joined Joe in a patch that was loaded with berries. Joe had a baggy and I've got a stomach. Joe got more but I sure enjoyed that patch of berries, and so did Sherry. Satisfied, we headed back.

Back down on the blacktop, we found the rock shop still open and so we stopped in for awhile. This store is only open on the weekends or during the week by appointment. He has some antiques in this store but his collection of rocks and

minerals is very good. His prices are really reasonable for the quality of his specimens. So the next time you go to Horseshoe Mountain and he is open, stop in. Oh, and bring more than \$20.



[This piece was riddled with vugs]

It was time to plow through the thunder storms back to Kettle Falls. Notice I didn't mention the rain. That's because we barely got a sprinkle. The storms pounded the fishermen, but we had our normal rain-free great day. A great day that was topped off with an ice cream cone at Sandy's.



[The main dig at the Koepke crystal site]
(The site found by Gary Koepke now deceased.)

Combined AFMS/NFMS Conference

By Johnie Pitman

The AFMS/NFMS Show in Billings from July 30-Aug 2 was outstanding. We took two days to see every thing and could have spent more time looking at dealers. Speaker Will Heierman presented "Corundum, Rubies & Sapphires" talking about these gems in the US. Lynn Edwards presented the story of "Edwards Black Jade" found in WY. Numerous display cases ran from regulars like at our show, to some very high quality. A "moon rock" loaned from NASA, Montana fossils, and the complete fossil of the "cave bear" found in Russia were on display.



One very impressive display was the "rock food" table by Bill and Lois Pattillo from Texas. The table travels all over the nation to various shows, you can see it at www.rockfoodtable.com

We were impressed with all the beautiful things carved from rocks by master carvers, whole cases of impressive works. There were demonstrations going on: Gemstone carving, making a Gem tree, cabbing, wire wrapping, beading and some others nearly all the time.

After two days and the event center getting more crowded we headed east to the first place we could get in the Yellowstone River and camped, while finding a few small "Montanas"; you need to go further east to find bigger ones. On Monday morning we joined the other 125 vehicles to drive the 80 miles south to the Pryor Mts and what a sight it is to see that many cars and 350 people at one rock hounding trip; unofficially Montana's

largest! The walk, after parking, was a half mile and then a scramble up the cliffs. They seemed proud of the Bearpaw agate and it is good if you can find it. It comes in nodules which are easy to find but only one in ten or twenty is good. We are still cutting ours open and so far nothing! But we know where to go and will go again some time when it is not so congested.

The Stillwater mine tour was limited in size and we did not get on the list. Tuesday was a Geological tour of the Pryor Mts a long trip and than the trips were going to Miles City and Glendive for Montana agates in the Yellowstone but again a long ways so we left Tues morning and went to Crystal Park spent a day digging, did OK but no " big" ones. We stopped at Gem Mt on the way home and got 2 bags of gravel which we will process when we get time. That is our trip to the show and we had a very good time, saw lots of country and rockhounds are always a friendly bunch.

Rock Field Trips for Aug-Sept:

Key: (+) - cars with good clearance
 (++) 4wd vehicles only
 (>) - hard rock tools (<) - loose rock tools (<>) both loose and hard(#)- digging tools (&) a long day expected

*Sat. 8--29 Flagstaff Mt. Barite, Fluorite - Meet at Harvest Foods parking at 9 AM (<> &).

*Sept. Sunday 9--13 Red Marble - Red Crystalline Magnesite, Meet at safeway parking in Chewelah at 10 AM. (<>)

*Sat. 9--26 -South Fork Sherman Creek -Diopside Crystals, meet at Harvest Foods parking at 10 AM. (<>)

Please inform the trip leader if you plan to go on one of these or you may be left behind.

More from Montana

Club Member (and award winner) Bev Bockman put more information and links to pictures in the Coeur d' Alene newsletter. A good website to check out with pictures from the show is by Michael Burton http://teardrop.blogicalthoughts.com/td_afms_nfms_show_2009.html Here are some samples.



[Try this with your mahogany obsidian]



[Cave Bear from Siberia]



[Heavy Salmon]



[This is either the moon rock or extremely over-rated leaverite]

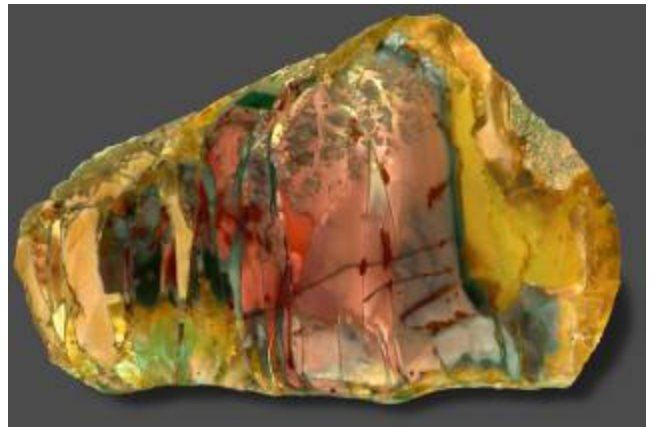
Bev also recommends the following
**2009 Rock and Gem Shows in
 WA., OR. , ID. & MT**
 SUPPORT YOUR FELLOW
 ROCKHOUNDS AND ROCK CLUBS.
 Sept. 12-13 Marcus Whitman Gem and
 Mineral Society-Walla Walla
 Sept. 18-20 Portland Regional Gem and
 Mineral Show— Hillsboro
 Sept. 18-20 Far West Lapidary and
 Gem—Coos Bay
 Sept. 26-27 Hellgate Mineral Society—
 Missoula MT.
CONSULT www.amfed.org/nfms
FOR SHOW DETAILS

World of Jaspers

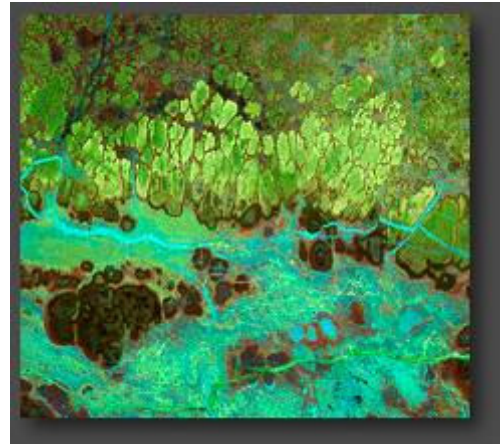
Ann Berger called to look into getting a movie made from the pictures on this web site, <http://www.worldofjaspers.com/> by Hans Gamma. Not only are the jaspers fabulous, the web site is very tastefully done.



Hematite Jasper – Arizona



OWYHEE: RIVER: CANYON



Parrot Wing Jasper, State of Nayarit, Mexico

Membership Dues:

\$15.00 per household per year is due to the club Treasurer Sylvia Allen (see below) on the third Tuesday of November for regular members.

Webpage: www.mapmet.com/rocks

Contact: Johnie Pitman, President, 509 684 8887.

We, **The Panorama Gem and Mineral Club**, are a multi-faceted group of mineral-minded people. Our proud members include some real gems, a few fossils, and even some diamonds in the rough. A few have lost some of their marbles, but they know where to get more! A few need to polish their coordination because they are always tumbling! And some are miners who use the "silver pick" as their tool of choice! It should be crystal clear, that we all enjoy this unique conglomeration and above all else we strive to **HAVE FUN**. And we never throw stones (away).

BBQ in August

You will see notice in the minutes that the August meeting on Tuesday the 18th will be at the City Park in Chewelah for a potluck dinner. Head for the shady side. Bill Allen will bring down his big ole BBQ on a trailer and grill up some burgers from Jerry and Vanita Novak, so bring something to go with that. We will begin the meeting at 5:30 and eat at 6PM. I suppose that means there will be some business involved. Oh well.

Martell's Rock Shop

2 Baxter Lane
Kettle Fall, WA 99141
509-738-3041
509-675-0390
bkmartell@hotmail.com



Tumblers, Grinders,
8" & 10" Trim Saws
Vacuum Casting
Machine + molds, waxes
etc. Rocks, Slabs, Cabs,
Jewelry...

Fruits, Berries and
Vegetables in season
(no not petrified – from
the garden.)



**Mineral Identification
Mineral/Mine Locations**

Bristow Enterprises
PO Box 1165
Chewelah, WA 99109
Bristow@theofficenet.com
www.minrls.com

Jewelry Repair & Custom Orders

SAGO

NATURALS & MORE
SYLVIA ALLEN, C.H., M.H., C.N.

10% off for cash

"LOOK GOOD OUTSIDE,
FEEL GOOD INSIDE"

Finest Quality
Vitamins & Herbs
Homeopathics
Aromatherapy

Jewelry

Books

Faceted & Non-faceted Gemstones

Mail Orders Welcome!

Hours: 9 to 5:30 Tues. - Fri.
Saturday 10 to 5 Closed Sunday & Monday

Phone 509-935-4388
Toll Free 877-935-2633
110 E. Main, Chewelah, WA 99109

This newsletter is published monthly by the Panorama Gem and Mineral Club. Editor: Joe Barreca, 509-738-6255, info@mapmet.com.

Panorama Gem and Mineral Club: Organizational Chart

Officers:			
President:	Johnie Pitman	701 B Williams Lake Rd, Colville, WA 99114	684-8887
Vice-President:	Steve White	1337 Boise Rd, Kettle Falls, WA 99141	738-2195
Secretary:	Ginger Pitman	701 B Williams Lake Rd, Colville, WA 99114	684-8887
Treasurer:	Sylvia Allen	2633 Highline Rd, Chewelah, WA 99109	935-4388
Trustee 1:	Scott Jackson	1028 Old Hwy 12 Mile Rd, Colville, WA 99114	684-6371
Trustee 2:	Steve Fox	PO Box 595, Marcus WA, 99151	684-2136
Trustee 3:	Warren Buell	2782 Sand Canyon, Chewelah, WA 99109	935-8427
Committee Chairs			
Program Coordinator:	Bev Bockman	1750 N Havichur Loop, Post Falls, ID 83854	208-773-5384
Hospitality:	Vanita Novak	2621 Pleasant Valley Rd	738-4578
Field Trips:	Rex Barrans	PO Box 348, Chewelah, WA 99109	935-8461
		rbarrans@centurytel.net	
Librarian:	Ruth Ross	750 N Lincoln, # 6, Colville, WA 99114	684-4925
Historian:	Carol Price	PO Box 77, Laurier, WA 99146	684-2857
Newsletter:	Joseph Barreca	2109 Hwy 25 South, Kettle Falls, WA 99141	738-6155
Show Chair	Bill Allen	2633 Highline Rd, Chewelah, WA 99109	935-4388