

Place: Arden
Community Club
Hall Rd
Arden, WA



Time: 7:00 PM
Third Tuesday
Each Month
(Jan.-Dec.)

The Panorama Prospector January 2013

Minutes for November, 20, 2012

By Ginger Pitman

This meeting is our annual scholarship auction fund raiser. Twenty five members were there for a spirited event.

The Rainier Snakeskin Agate prize from the American Federation was on display. It was decided to use it as a raffle prize for the club.

Dues are due and our paper work with member names goes into the Northwest Federation early Jan.

Arden Fritz gave the nominating committee's slate of nominees for the election at the Dec meeting and asked for nominations from the floor. The only addition to the committee's presentation was adding Becky Dobbs at the secretary's position. Arden will prepare the ballots for the meeting.

Bill gave the show update. It looks like we can add a couple of vendors. The show will still be free admission. Dates are Mar 29-30. The 4-H Club will do the food, we do need sewn bags but not till next year, 4-H may help fill them. We will need a theme for the show.

It was break time as we set up for the auction; Bill leading as the auctioneer and his trusty helper Daniel.



The Annual Christmas Party

By Joseph Barreca



[The Annual Christmas Potluck and Gift Exchange]
[Picture thanks to Bill Sebright]

The Panorama Gem and Mineral club had its annual Christmas party on our regular meeting night December 18th. Besides eating, which we did with gusto, we elected officers. Our new president is Bruce Hurley, shown here on the right with his wife Jan. On the left is Arden Fritz and his wife Kathy. Arden and Bill Lupton were the nominating committee for this year's officers. The fact that the newly-elected president and a member of the nominating committee are sitting right across from each other demonstrates absolute collusion in shifting the mighty office of president from Johnie Pitman – who has been our president for at least the last 10 years – to newbie Bruce Hurley, geology professor at Whitworth College and owner of <http://www.highdesertmineralsnv.com> Johnie has taken over Sylvia Allen's position of Treasurer. How the mighty have fallen!

With all this political intrigue, it's amazing that we had such a good time. Well, the food was great – as always. Heck, even the regular meeting snacks have been great. But this was way over the top. I can't say however that there was much in the way of greens and vegetables. We'll have to wait until the annual BBQ in August for those.

We didn't have to wait however for the gift exchange. There were gifts for everyone and some

Minutes for December 18, 2012

By Ginger Pitman

Our potluck Christmas Dinner was a great success. Forty three members and lots of food were in attendance.

Order of business for the evening was the election of officers; election results are:

President: Bruce Hurley

V. President: Bob Bristow

Secretary: Luci Bristow

Treasurer: Johnie Pitman

Board of Trustees:

Bill Lupton (2 yr. term)

Bill Sebright (3 yr. term)

A gift exchange followed and then a few stories/poems and rock hounding experiences were shared.

We will start our new year with loads of energy and wonderful camaraderie as only old rock hounds can.

special ones for the kids. That was a really nice touch. My favorite of the night however were the tiny flashlights on key rings that Ann Berger gave to everyone advertizing her business, Round Rocks Etc. (509-684-4082). I used mine right away to practically blind my wife while checking to see if our cat, Gray-C had indeed dropped another mouse on our bed in the middle of the night. It was a false alarm, but if you have one of these little lights, be careful, they can be big trouble.

My gift box was full of special plastic storage containers from Rubbermaid designed so that the lid snapped onto the bottom so you won't lose track of it. This was an irrefutable example of the power of karma. Several years ago I stopped in the middle of the kitchen and announced out of the blue that "We need more Rubbermaid Products." (I was thinking it would be nice to have little plastic containers just the right shape for a piece of pie, which I have yet to find.) Nevertheless I will never hear the end of the peals of laughter that declaration evoked then. This present kicked off a whole new chapter and I may be haunted by the ghosts of Rubbermaid past the rest of my life.

At any rate, to my knowledge, we all survived Christmas and are forging ahead into 2013.



Chips From The Outcrop

By Bruce Hurley

New Year's morning I got up, made a frosty trip to the mailbox, brewed some coffee, and headed to the basement rock room. And then it hit me - now it is 2013, and there are some big shoes to try to fill at the Panorama Gem & Mineral Club. Following someone good is never easy;

following someone legendary is even tougher. You may take their place, but you never replace them.

And so it is with Johnie Pitman. He has been president of our club for the past ten years, four times as long as I have even been a member. To most rockhounds I have met outside our club, he is the face of Panorama, with a reputation for being friendly, honest, capable, dependable, and hard-working. Those are pretty good attributes to have, for a person and a club. As the successor to Johnie as president, I will strive to uphold these same standards, for myself and our club.

As a club, I think we have lots to look forward to in 2013. Our show is already a good one, and I believe the new facility will make it even better. The shop is doing well, and I think we can put together several field trips to new localities this year, along with several trips back to popular locations from the past. The summer picnic, scholarship fund auction, and Christmas party are ever-popular events, and some good ideas have already been proposed for interesting programs at this year's meetings. We should not run short of things to do.

This is where everybody else comes in. There is a great deal that I do not know, both about the club, and collecting localities and resources available to us. That means I am going to need your input and assistance to keep things running smoothly and in the right direction. And that input and assistance is just as important from our individual members as it is from the office-holders. The Panorama Gem & Mineral Club is your club, our club, and working together we can make it the club we all want it to be.

ALERT ALERT ALERT TIME
CRITICAL LAND USE ISSUE FOR
ROCK COLLECTING ON STATE
LANDS

Jade Mine and Possible Trip

From Ed Lehman

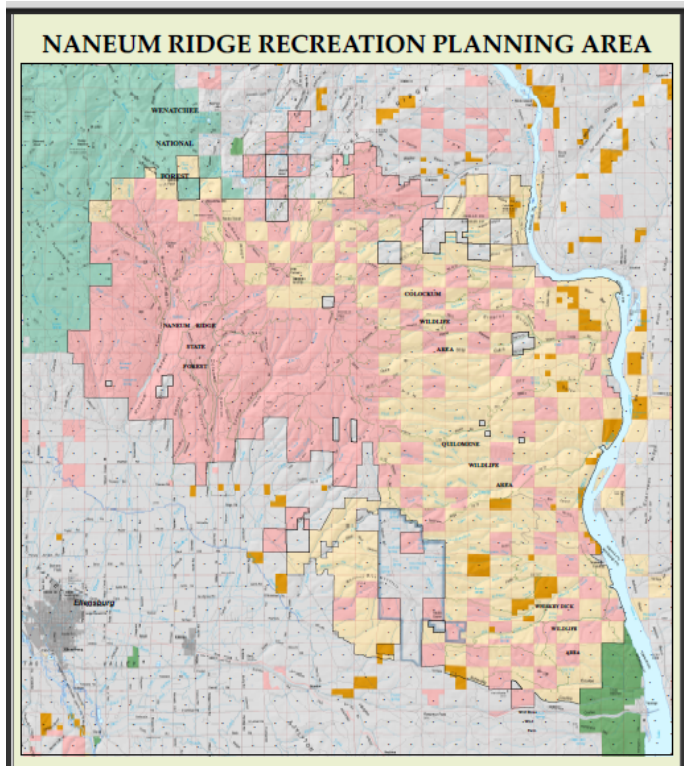
I was forwarded a question about Jade locations in WA, particularly, East of Cascades. I have been a rockhound for over 50 years. My biggest love is field collecting and prospecting. I know they find good Jade in the Teanaway River off Hwy 970 between Cle Elum and Ellensburg. They find a nice lapidary green stone some locals call Jade (but it's not) at the horse camp up the trail at the end of North Fork Teanaway River Rd. The real Jade comes from the main river. I don't know what fork it comes from. I am the main holder of a large Jade mine N W of Darrington WA. We have 1 lode claim and 6 placer claims (1400 acres). We extract a couple tons a year. Some good gem stones, and lots of carving material. Many shades of green to black, and some with blue centers. Some pieces are over 600#, but most 1 man stones.

Most common Jade occurrences to my knowledge are 10 miles South of Hwy 530 (Arlington - Darrington Hwy) to the Canadian border.

We are planning on having fee trips to the mine next year. It is a 1 1/2 mile hike, 1/2 of it strenuous. The Jade is plentiful. You can dig it out of the canyon bottom, or get it out of the Jade wall at the top of a very steep canyon (only 200 yards from mine camp, but very steep and loose footing). The fee will be \$ 100 for all you can carry up to 80# max for people in good shape. Absolutely no problem filling your pack on a day trip. You must appear to be in good condition, and sign a release of liability. For larger quantities, we will fly it out on one of our helicopter runs, bagged with your name at a bartered price. The helicopter fee is about \$.50 a pound. Single Jade pieces of Jade less than 700# . Over 700# we need a bigger helicopter. The over 80 # loads are \$ 7/ # plus Flight.

For other collecting opportunities, I organize and guide trips for the WA ST Mineral Council. Look at mineralcouncil.org under Field Trips. Most trips are free.

Ed Lehman - Marysville R & G, Darrington R & G, WSMC, & 2 WA Jade groups



Bev Bockman sent out an alert earlier this month to have rockhounds express their concern that planning in progress for the Naneum Ridge Recreational area would include opportunities for rockhounding in the area shown above. It is between the Forest Service lands in green on Blewett Pass and the Columbia River. The pink areas are lands managed by Washington State DNR and the yellow area is Fish and Wildlife land. This area is just north of the Ginko Petrified Forest at Vantage, may include some Ellensburg Blue Agate territory and shows several mineralized blocks managed by the BLM in darker orange.

The commenting period closed January 4th and a query on the DNR site does not even find the word Naneum today. We are not sure what kind of input they received or what the Department of Natural Resources will do about it. But it is well-worth watching.



[Picture courtesy of www.blueagates.com]

Invitation to the ...

Fourth annual World Rock Tumbling Contest

The Feather River Lapidary & Mineral Society invites you to join us for our fourth annual World Rock Tumbling Contest. This year we will be using Tuledad Canyon Agate. Tuledad Canyon is located on the California Nevada border near Susanville CA. Pictures of the polished rock will be on our web site after January 1st.

Prizes

First place \$250.00
Second Place \$100.00
Third Place \$50.00

For more information
www.FeatherRiverRocks.org
Phone: [\(530\) 877-7324](tel:5308777324)
Email: Tumbling@FeatherRiverRocks.org

This message is your invitation and your application. Print it and fill out the information, make out the check payable to FRLMS and mail to;

Feather River Lapidary & Mineral Society or FRLMS
P.O. Box 2645
Oroville, CA. 95965

Entry fee this year will be \$40.00 for continental US residents. This will include shipping material to you. All others fees will be \$40.00 plus shipping. Please send correct fees and how to ship.

- (3LBS.) of rough will be shipped to you when application & check are approved.
- We will stop accepting applications June 1st, 2013.
- (1/2 LB.) finished rock must be returned with copy of entry form and must be post marked no later than August 15th, 2013.

Name; _____ Phone; _____

Address; _____

Email; _____

[Click this line if you're having trouble printing. \(A pdf file will open.\)](#)

Mars Meteorite Sparks New Questions About Red Planet



The Martian meteorite known as “Black Beauty” weighs approximately 320 grams. (Carl Agee/University of New Mexico)

Scientists [have determined](#) a meteorite discovered in the [Sahara Desert](#) in 2011 is about 2.1 billion years old and could be the first meteorite to come from the surface of Mars.

The meteorite, designated [NWA \(North West Africa\) 7034](#) and nicknamed “Black Beauty,” weighs about 320 grams and is loaded with [Martian water](#). It is so uniquely different from other Martian meteorites that scientists say it is in a class of its own.

They believe Black Beauty, which contains 10 times more water than other Martian meteorites from unknown origins, formed during the beginning of the most recent [geologic period on Mars](#), known as the [Amazonian](#).

“The age of NWA 7034 is important because it is significantly older than most other Martian meteorites,” said Mitch Schulte, program

scientist for the [Mars Exploration Program](#) at NASA headquarters in Washington. “We now have insight into a piece of Mars’ history at a critical time in its evolution.”

The NASA-funded team of scientists from various universities and institutions analyzed the mineral and chemical composition, age, and water content of the meteorite.

Black Beauty’s [chemical composition](#) includes [organic carbon](#), which is similar to other Martian meteorites, known as [SNC meteorites](#). However, other aspects of Black Beauty’s composition are very different.

“The texture of the NWA meteorite is not like any of the SNC meteorites,” said Andrew Steele, who led the carbon analysis at the [Carnegie Institution’s Geophysical Laboratory](#). “This is an exciting measurement in Mars and planetary science. We now have more context than ever before to understanding where they may come from.”

Black Beauty, according to the research team, is made of cemented fragments of [basalt](#), rock formed from rapidly-cooled lava. The fragments are primarily [feldspar](#) and [pyroxene](#), most likely from volcanic activity.



[Story and picture from Voice of America]

Scientists say the Black Beauty meteorite came from the surface, or crust, of Mars (NASA)

“This [Martian meteorite](#) has everything in its composition that you’d want in order to further our understanding of the Red Planet,” said Carl Agee, leader of the analysis team and director and curator at the [University of New Mexico’s Institute of Meteoritics](#) in Albuquerque. “This unique meteorite tells us what [volcanism](#) was like on Mars two billion years ago. It also gives us a glimpse of ancient surface and environmental conditions on Mars that no other meteorite has ever offered.”

Code of Ethics

- I will respect both private and public property and will do no collecting on privately owned land without permission from the owner.
- I will keep informed on all laws, regulations or rules governing collecting on public lands and will observe them.
- I will, to the best of my ability, ascertain the boundary lines of property on which I plan to collect.
- I will use no firearms or blasting material in collecting areas.
- I will cause no willful damage to property of any kind such as fences, signs, buildings, etc.
- I will leave all gates as found.
- I will build fires only in designated or safe places and will be certain they are completely extinguished before leaving the area.
- I will discard no burning material - matches, cigarettes, etc.
- I will fill all excavation holes which may be dangerous to livestock.
- I will not contaminate wells, creeks, or other water supplies.
- I will cause no willful damage to collecting material and will take home only what I can reasonably use.
- I will practice conservation and undertake to utilize fully and well the materials I have collected and will recycle my surplus for the pleasure and benefit of others.
- I will support the rockhound project H.E.L.P. (Help Eliminate Litter Please) and will leave all collecting areas devoid of litter, regardless of how found.
- I will cooperate with field-trip leaders and those in designated authority in all collecting areas.
- I will report to my club or federation officers, Bureau of Land Management or other authorities, any deposit of petrified wood or other materials on public lands which should be protected for the enjoyment of future generations for public educational and scientific purposes.
- I will appreciate and protect our heritage of natural resources.
- I will observe the "Golden Rule", will use Good Outdoor Manners and will at all times conduct myself in a manner which will add to the stature and Public Image of Rockhounds everywhere.